

HOLLAND MARK V™ SERIES LANDING GEAR



INDUSTRY-LEADING STANDARD FEATURES

Heavy-Duty Gearbox

- Gearbox with low-temperature premium lube rated for service for -65°F to 225°F

Double-D Crank Handle Connection

- Shaft with double-D end means a stronger more stabilized cranking connection

Large 5 1/8" Square Upper Tube Housing

- Large size tube with radius corners provides maximum strength to meet heavy-duty application demands

Heavy-duty One Piece Inner Tube

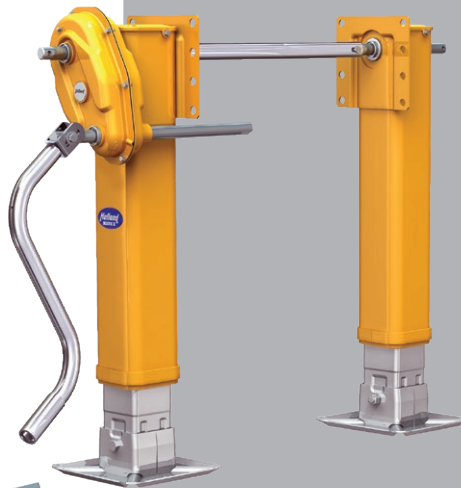
- One piece inner tube for maximum strength when the leg is in the extended position

**Black Armour Metal Treatment**

- Treatment process, unlike paint or powder coating, means the ultimate in corrosion protection with no rust creep

*Product supplied is black (not yellow as pictured).

SIDE LOAD CAPACITY 32,000 LBS.



CAPACITIES

62,500 lbs. Lift Capacity
(100 ft./lbs. Input Torque)
200,000 lbs. Load Capacity
32,000 lbs. Side Load Capacity

GEARING

2.5 Turns Per Inch - High Gear
33.7 Turns Per Inch - Low Gear

All specified capacities are tested in accordance with AAR M-931.

STANDARD 5-YEAR WARRANTY

HOLLAND Mark V models are available with standard 5-year warranty.

5-year warranty covers defects in materials and workmanship only.

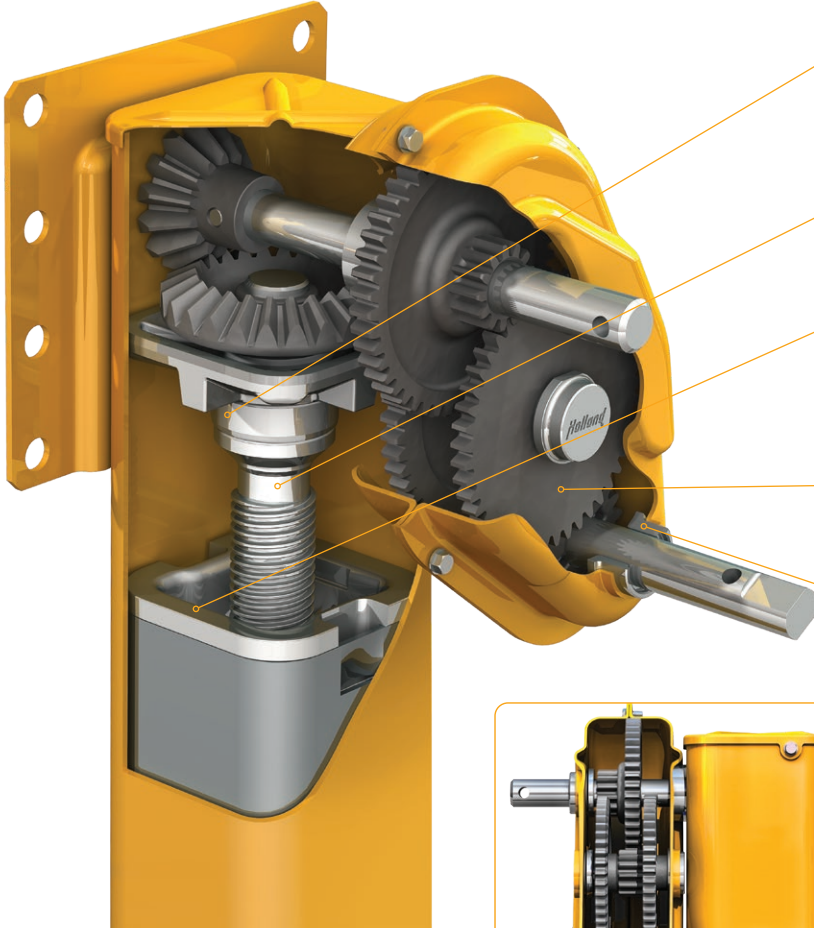
Recommended protection practices for your HOLLAND landing gear include routine greasing at **6 month intervals**.

For a copy of the warranty click [here](#)



HOLLAND MARK V™ SERIES LANDING GEAR

BUILT-IN DURABILITY FOR ROBUST PERFORMANCE



Heavy-Duty Thrust Bearings

Maintains smooth elevating screw and bevel gear operation. Heavy-duty MARK V™ model utilizes tapered roller bearings.

Double Lead Elevating Screw

1-5/8" diameter, rolled threads for added strength and smooth lift.

Riser Nut with Deep Grease Reservoir

Abundant grease source means constant lubrication of the elevating screw.

A Durable Ductile Gears

Three large, in-line, heat-treated ductile iron spur gears for robust performance.

Powdered Metal Shaft Bushings

Self-lubricating shaft bushings for increased service life.

Shaft Seals (standard)

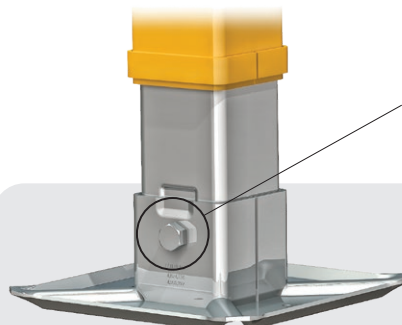
All driveshaft and crankshaft bushings include shaft seals to prevent water, dirt and other contaminants from entering the gearbox and upper leg.

Optional RCF

(Removable Cushion Foot)

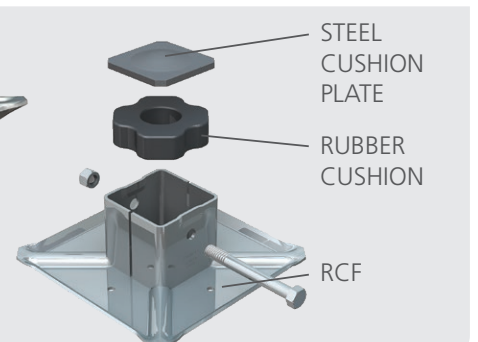
HOLLAND MARK V™ landing gear are available with an optional, patented removable cushion foot (RCF). A proven, innovative landing gear foot that has won the respect and recognition of our industry.

The RCF footwear option utilizes a heavy-duty rubber cushion that absorbs 50% more shock than conventional footwear.



RCF technology simply transmits the shock from the entire load in compression from steel-to-rubber-to-steel. That means reduced wear and damage to the cargo, trailer, and landing gear.


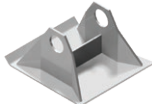

The RCF feature allows easy removal of a damaged foot by simply extracting a single bolt. No cutting or welding is required.

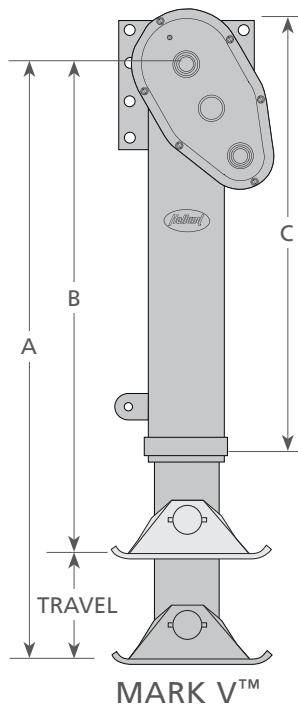


HOLLAND MARK V™ SERIES LANDING GEAR

MARK V™ SPECIFICATIONS

MARK V™

DIMENSIONS	TRAVEL	EXTENDED LENGTH (A)	RETRACTED LENGTH (B)	UPPER LEG (C)	PART NUMBER KIT	WEIGHT (Kg)	DRAWING
SELF LEVELING FOOT							
 FOOT CODE - 01	13.5"	41.3"	27.8"	25.9"	LGS-1A001	94	click here for drawing
	17.6"	49.5"	31.9"	30.0"	LGS-4A001	105	
	18.7"	51.8"	33.1"	31.1"	LGS-5A001	108	
SAND SHOE							
 FOOT CODE - 05	13.5"	42.2"	28.7"	25.9"	LGS-1A105	93	click here for drawing
	17.6"	50.5"	32.9"	30.0"	LGS-4A105	100	
	18.7"	52.7"	34.0"	31.1"	LGS-5A105	102	
REMOVABLE CUSHION FOOT							
 FOOT CODE - 24	13.5"	41.1"	27.6"	25.9"	LGS-1A024	95	click here for drawing
	17.6"	49.3"	31.7"	30.0"	LGS-4A024	103	
	18.7"	51.5"	32.8"	31.1"	LGS-5A024	105	



REPLACEMENT LEGS COMPLETE

MKV SET	Complete gearbox leg	Complete N/Gearbox leg
LGS-1A001	XA-S8-1A001	XA-S9-1A001
LGS-4A001	XA-S8-4A001	XA-S9-4A001
LGS-5A001	XA-S8-5A001	XA-S9-5A001
LGS-1A105	XA-S8-4A105	XA-S9-4A105
LGS-4A105	XA-S8-4A105	XA-S9-4A105
LGS-5A105	XA-S8-5A105	XA-S9-5A105
LGS-1A024	XA-S8-1A024	XA-S9-1A024
LGS-4A024	XA-S8-4A024	XA-S9-4A024
LGS-5A024	XA-S8-5A024	XA-S9-5A024

