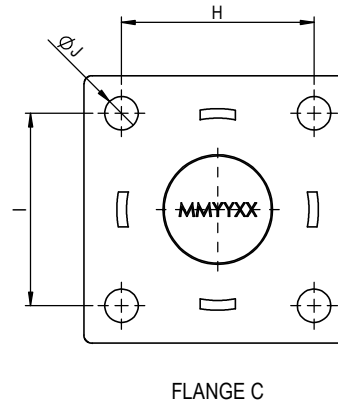
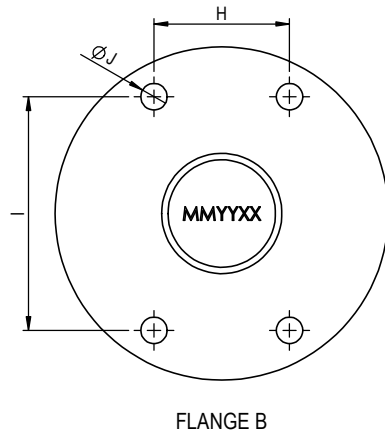


NOT FOR CONSTRUCTION
FOR IDENTIFICATION & REFERENCE ONLY



NOTE: ALL DIMENSIONS ROUNDED TO THE NEAREST mm

PART NUMBER	DESCRIPTION	LENGTH A	LENGTH B	ØC	ØD	ØE	ØF	G	H	I	ØJ	R	THREAD SIZE	FLANGE
H270MK2A	1500kg 12" AXLE	300 mm	106 mm	32 mm	19 mm	39 mm	37 mm	176 mm	89 mm		13 mm	4 mm	3/4" UNF	A
H280MK2A	1750kg 12" AXLE	300 mm	106 mm	35 mm	22 mm	45 mm	43 mm	175 mm	89 mm		13 mm	5 mm	3/4" UNF	A
H290MK2A	2000kg 12" AXLE	300 mm	118 mm	35 mm	32 mm	45 mm	43 mm	184 mm	89 mm		13 mm	6 mm	1" UNF	A
H450-0110	1750kg 10" AXLE	250 mm	106 mm	35 mm	22 mm	45 mm	43 mm	121 mm	51 mm	87 mm	10 mm	3 mm CHAMFER	3/4" UNF	B
E150-0110	1750kg 10" AXLE	250 mm	106 mm	35 mm	22 mm	45 mm	43 mm	125 mm	72 mm	72 mm	13 mm	5 mm	3/4" UNF	C

REVISIONS REV. DESCRIPTION BY DATE APRVD 1 FIRST ISSUE CH 23/11/2023 CY				PROJECTION DIMENSIONS IN MILLIMETRES DO NOT SCALE DRAWN TO NZS/AS 1100		CURRENT STATUS: RELEASED FIRST DRAWN DATE: 15/06/2024 FIRST DRAWN BY: CH SHEET 1 OF 1				MATERIAL: FINISH: RAW SCALE (A3): 1:2 TOLERANCES AS STATED		BRAKE-AXLE IDENTIFICATION & REFERENCE DIMENSIONS DRAWING NUMBER: BRAKE-AXLE IDENT H270MK2B			REVISION 1
---	--	--	--	---	--	--	--	--	--	---	--	--	--	--	---------------