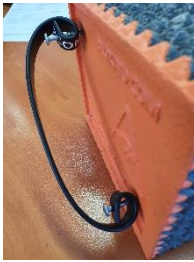


BXLK1 Blox Lanyard Instructions for Fitting



Blox lanyard can be used to replace both screw in lanyard and plug type. Remove the old lanyard from the block. Drill two 3.5mm holes in the desired location for the replacement lanyard. Insert lanyard as shown and tighten screws until screw head tightly contacts lanyard.

BXLK1 Blox Lanyard Instructions for Fitting



Blox lanyard can be used to replace both screw in lanyard and plug type. Remove the old lanyard from the block. Drill two 3.5mm holes in the desired location for the replacement lanyard. Insert lanyard as shown and tighten screws until screw head tightly contacts lanyard.

BXLK1 Blox Lanyard Instructions for Fitting



Blox lanyard can be used to replace both screw in lanyard and plug type. Remove the old lanyard from the block. Drill two 3.5mm holes in the desired location for the replacement lanyard. Insert lanyard as shown and tighten screws until screw head tightly contacts lanyard.

BXLK1 Blox Lanyard Instructions for Fitting



Blox lanyard can be used to replace both screw in lanyard and plug type. Remove the old lanyard from the block. Drill two 3.5mm holes in the desired location for the replacement lanyard. Insert lanyard as shown and tighten screws until screw head tightly contacts lanyard.

BXLK1 Blox Lanyard Instructions for Fitting



Blox lanyard can be used to replace both screw in lanyard and plug type. Remove the old lanyard from the block. Drill two 3.5mm holes in the desired location for the replacement lanyard. Insert lanyard as shown and tighten screws until screw head tightly contacts lanyard.