

PRESA DI FORZA A COMANDO PNEUMATICO

PNEUMATIC CLUTCH POWER TAKE-OFF

CODICE PTO
PTO CODE

50-40

CAMBIO
GEARBOX

FULLER

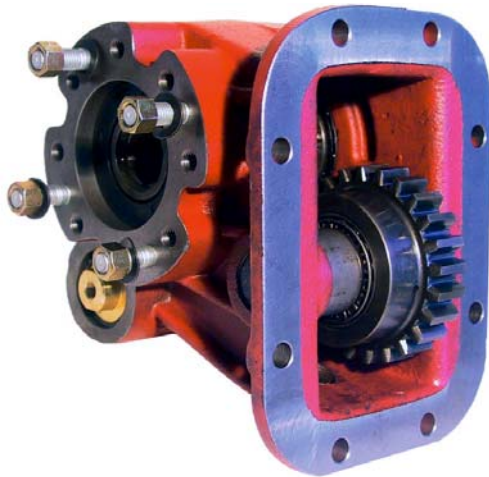
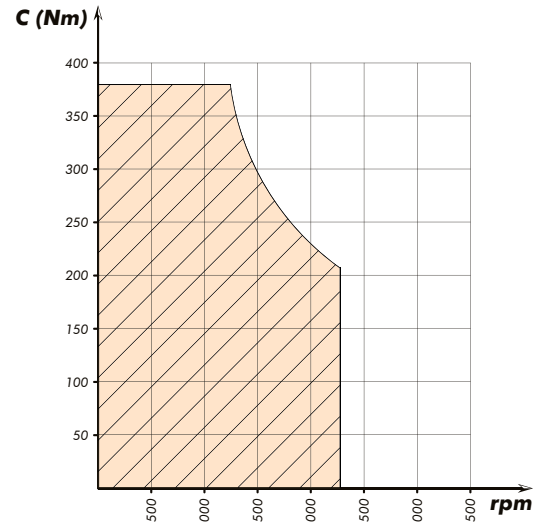
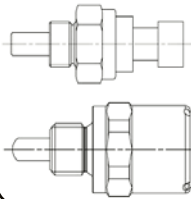


DIAGRAMMA DI UTILIZZO WORKING CONDITION



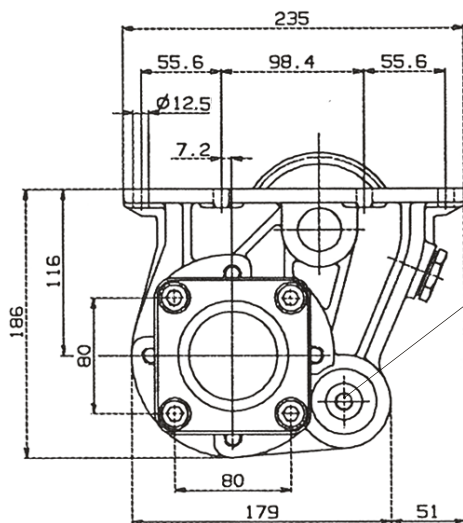
Interruttore segnalazione PTO inserita / PTO pressure signal switch



PACKARD
311-001-00116

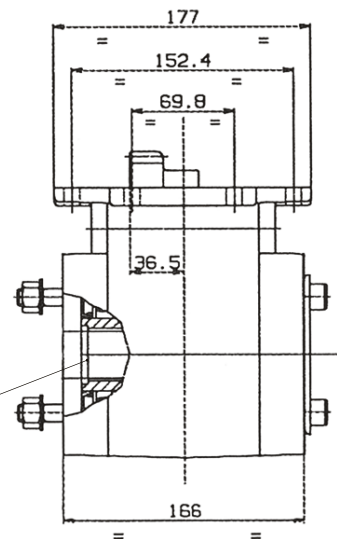
DIN 72585
311-001-00205

OPTIONAL
Da ordinare separatamente
To be ordered separately



Attacco raccordo aria
Air inlet
G 1/8

Mozzo/Hub
8x32x36
(ISO 14)



Data: Mercoledì 06 giugno 2012

Codice foglio: 997-250-04017 Rev: AC

Tipo cambio Gearbox	Codice PTO PTO code	Versione Version	Giri pto a 1000 giri motore Pto ratio@1000 eng.rpm rpm	Coppia max. Max torque Nm	Lato montaggio Mounting side	Uscita Output	Rotazione Rotation	Kit di montaggio Mounting kit	Peso Weight Kg
Vedi indice See index	50-40-177	17	Vedi indice See index	380	Inf. Low Side	Post. Rear	Oraria Cw	154-3-6014	19
	50-40-186	18				Ant. Front	Antioraria Acw		
	50-40-2175	217				Post./Ant. Rear/Front	Ora./Ant. Cw/Acw		

pag.1

O.M.F.B. S.p.A. Hydraulic Components
We reserve the right to make any changes without notice.
Edition 2004.02 No reproduction, however partial, is permitted.
Via Cave, 7/9 25050 Provaglio d'Iseo (Brescia) Italy Tel.: +39.030.9830611
Fax: +39.030.9839207-208 Internet:www.omfb.it e-mail:info@omfb.it

COMPANY WITH
QUALITY SYSTEM
CERTIFIED BY DNV GL
= ISO 9001 =