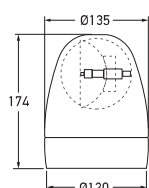




Rotafix Revolving Beacon - Amber

Rotafix revolving beacon with polycarbonate lens and rubber base.



P/N 1733

Part Number	12 VOLT	24 VOLT	
	1732	1732-24V	
	1733	1733-24V	MAGNETIC MOUNT
Mounting	Fixed base or with magnetic attachment.		
Power Consumption	12V - 55W 24V - 70W		
Rotation	160 +/- 30rpm		
RF Suppression	Conducted Class 5 (CISPR 25).		
Bulbs to Suit	12V 24V	C1255 C2470	
Protection	IP 5K4K (Protection against dust and water splashing with increased pressure) IP X9K (Protection against high-pressure/steam jet cleaning)		
Spare Parts	9.1730.01	● Amber polycarbonate lens	
Compliance	ECE R65/00	[e] 2181	

HELLA does not recommend the magnetic base version for use on a moving vehicle (see page 188).