



# GREASE AND FLUID PUMPING AND HANDLING EQUIPMENT

**BRANCHES NZ-WIDE | 0508 677 704 | [TWLNZ.CO.NZ](http://TWLNZ.CO.NZ)**

Proudly Playing a Part  
in NZ Road Transport  
since 1966







## Contents

		Page
Grease	Couplers & Hoses	3
	Grease Guns	5
	Grease pumping equipment	7
	Automatic Systems	7
Pumping Equipment	Manual Pumps	8
	Battery Pump	9
	Pneumatic oil pumps	9
	Hand Pieces	10
	Hose Reels	10
	Oil Drain	12
	Storage	12
Handling	iCan	13
	Funnels	14
	Spray	14
	Quick Smart Drum Clamps	14
Containment & Spill Kits	Work floor	15
	Spill Kits	15
Cleaning	CRC Smart Wash system	17

TWL offers a range of quality products for the delivery and storage of lubricating fluids and grease, product you can trust will last the distance and give you piece of mind.

Knowing that the grease will pump and that the oils are being kept and delivered clean ready to use should be something we take for granted, and often we do! TWL can help you make sure the equipment you use is fit for purpose and keeping up with the latest requirements with some of the best global brands available.

Copyright © TWL. The illustrations, information and specifications contained within this catalogue remain the property of TWL. No part of this catalogue may be reproduced in whole or in part without prior approval. While all care has been taken in the production of this catalogue, no responsibility for errors, omissions or variations will be accepted. Photography, descriptions and references are subject to change without notice.



## COUPLERS & HOSES



**Quick Release grease gun coupler**

Part No.  
A14512



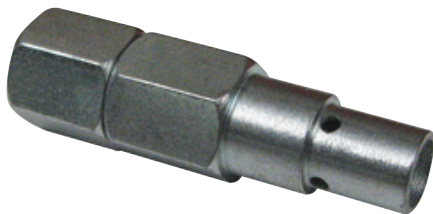
**4 jaw coupling 15mm OD**

Part No.  
14513



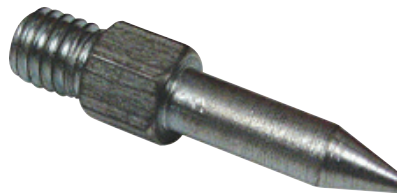
**3 jaw slim-line coupling 14mm OD**

Part No.  
308730B



**Grease needle with shroud**

Part No.  
A14503



**Replacement needle point**

Part No.  
A14503NO



**Std Button head pull-on coupler**

Part No.  
A14506



**Giant Button head pull-on coupler**

Part No.  
14002



**Injector needle, for sealed bearings**

Part No.  
B200



**Grease Gun Extension Rigid**

Part No.  
14515

**Grease Hose 300mm 14500psi**

Part No.  
14551

**Grease Hose 500mm 14500psi**

Part No.  
14552

**Grease Hose 700mm 14500psi**

Part No.  
14553

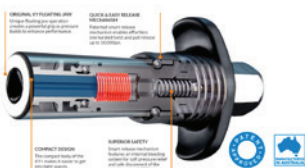


## COUPLERS &amp; HOSES



**Macnaught High Pressure grease coupler**

Part No.  
KY



**Macnaught Load and Lube Quick Release Grease Coupler**

Part No.  
KYPLUS-01



**Macnaught Std Button Head Coupler**

Part No.  
KSR  
**Macnaught Giant Button Head Coupler**

Part No.  
KGR



**Macnaught Niddlepoint 12" for sealed bearings**

Part No.  
KZLNS

## GREASE NIPPLES

THREAD		STRAIGHT	45	67 1/2	90	SELF TAPPING	BUTTON HEAD	BULK (100PC)
BSP	1/8	AL29	ALA34	ALA39	ALA44		LT46	L29-100 (Str)
		L29-LH (Large Hex)						LA44-100 (90°)
		L30 (Short)						
BSF	1/4	AL48	ALA52	ALA56	ALA60		LT52	LA34-100 (45°)
		AL1	LA5	LA8	LA10		LT320	
		L113 (23.8mm Long)						
BSW	5/16	L12	LA16	LA20	LA24			
		LA31	LA35	LA41	LA45		LT22	
		L2	LA6	LA9	LA11			
NPT	1/8	L28	LA138	ALA37	ALA43	L311	LT324	
		L47	LA51	LA55	LA59		LT325	
UNF	1/4	AL185	ALA187	ALA188	ALA189	L310	LT210	
		L652 (17.4mm Long)				LA312 (45)		
		AL114-U (23.8mm Long)				LA313 (90)		
		L1020 (28.6mm Long)						
		L123 (4mm Long)						
		L128 (40.9mm Long)						
METRIC	5 x 0.8	AL190	ALA192	LA193	ALA194			
		L195	LA197	LA198	LA199			
	6 x 0.75							
	6 x 1	AL161	ALA168		ALA165	L163	LT610	L161-100 (Str)
		L119 (29mm Long)						L168-100 (45°)
	8 x 1	AL162	ALA172		ALA169	L971	LT810	L162-100 (Str)
		L15	LA19		LA27		LT8125	
	8 x 1.25							
	10 x 1	AL200	ALA203		ALA204	L981	LT1010	
	10 x 1.5	AL205	LA206		LA207		LT1015	
	12 x 1.5				LA1215			

Kits	Metric	L4676
	Imperial	L4675
	Agricultural (Mix)	L4674



All Part numbers starting with "AL" in **BLACK** are blister packs of 10  
Part numbers in **RED** are available on request



## GREASE GUNS

### Alemlube Lever Action 450gm 12000psi

Part No.  
600A



### Alemlube Trigger Action 450gm 8500psi

Part No.  
660AN



### Alemlube EL Series Lever Action 450gm

- Alemlube EL Series Lever Action, 10000psi 450gm

Part No.  
G10020N



### Alemlube Lever Action 400gm 12000psi

Part No.  
200A



### Alemlube Trigger Action 400gm 8500psi

Part No.  
220A



### Alemlube EL Series Trigger Action 450gm

- Alemlube EL Series Trigger Action, 4000psi 450gm

Part No.  
G10010N



### Alemlube Air Operated 450gm

Part No.  
680AN



### Alemlube Air Operated 400gm

Part No.  
480AN



### Alemlube EL Series 450gm 18V Cordless

Part No.  
G10040N

### Alemlube EL Series 400gm 18V Cordless

Part No.  
G10044N



### Samoa Cordless Grease Gun 20V Lithium-ion, 450g

- Supplied with 2 x 2Ah batteries & plastic carry case
- Grease pressures of up to 7,250psi (500bar)
- Adjustable delivery rates of 100g/min or 160g/min
- Backlit display provides real time battery level, grease level and grease dispensed feedback information

Part No.  
630A





## GREASE GUNS



**Macnaught Lever Action 450gm  
12000psi**

Part No.  
K45-01



**Macnaught Trigger  
Action 450gm 10000psi**

Part No.  
K29-01

## Lube Shuttle Grease Cartridges to suit Screw In Style Grease Guns

**Lubemate Pistol Grip Screw in,  
with 300mm hose & 4 Jaw Coupler**

Part No.  
L-PG400LS



**Lubemate Lever Action  
Screw In, with 150mm rigid  
tube & 4 Jaw Coupler**

Part No.  
L-LG400LS



**Blue Tack EP2 Lube Shuttle  
Grease Cartridge**

Part No.  
VGLSBT/C12T.4

**Red Tack EP2 Lube Shuttle  
Grease Cartridge**

Part No.  
VGLSRT/C12T.4

**Super Moly5 EP2 Lube  
Shuttle Grease Cartridge**

Part No.  
VGLSSM5/C12T.4



## AUTOMATIC SYSTEMS

Automatic greasing systems can help to reduce maintenance cost and protect equipment from premature failure. By keeping a small amount of grease supplied often to the desired area, the risk of contamination entering is reduced when compared to manually greasing less often with more grease than is needed at the time.

We have a range of systems available to suit varied applications pumping up to EP2 grease, talk to one of our team about the costs and benefits.



## CENTRALIZED GREASING SYSTEMS

## Alemlube Header Block

Part No.	Disc
6132	2 Point
6134	4 Point
6136	6 Point



## GREASE PUMPING EQUIPMENT

**Samoa 55:1 ratio 20Kg Grease kit**

Part No.  
424170



**Samoa 55:1 ratio 20Kg Grease kit with trolley**

Part No.  
424150



**Samoa 55Kg Grease kit without trolley**

Part No.  
425170



**Samoa 55Kg Grease kit with trolley**

Part No.  
425150



**Samoa 180Kg Grease Kit with Trolley**

Part No.  
428262



**Samoa Loader Pump 20Kg**

Part No.  
108000



**Samoa Grease Gun with Swivel**

Part No.  
413080



**Samoa Swivel 1/4 BSP M-F**

Part No.  
414300



**Macnaught Grease Booster Gun and Swivel**

Part No.  
B2-01



**Macnaught Swivel 1/8 (M) x 1/4 (F) NPT**

Part No.  
ZSB



## CENTRALISED GREASING SYSTEMS

**6mm grease filled nylon tube – 20m roll**

Part No.  
5125622-20



**Connector 6mm x 1/8 bsp, 90°**

Part No.  
6400081



**Connector 6mm x 1/8 bsp, Str**

Part No.  
6400298



**Olive 6mm**

Part No.  
5100652



## MANUAL PUMPS

**Alemlube Drum  
Pump 20L Gear &  
Eng Oil**

Part No.  
8828N2-01



**Alemlube Spring Drum  
Pump 20L Gear & Eng Oil**

Part No.  
9928



**Alemlube Heavy Duty  
Gear and Engine Oil  
20L Drum Pump**

Part No.  
10028



**Alemlube ATF Pump 20L**

Part No.  
8826N



**Alemlube Lever Action Pump 60-205L  
Oil, ATF, Diesel, Kero & Coolant**

Part No.  
304600



**Alemlube Rotary Drum Pump  
diesel, petrol, kerosene and  
low viscosity oils**

Part No.  
501A



**Oil Suction gun 530ml for emptying and  
filling gear boxes and diffs**

Part No.  
21040





## MACNAUGHT BATTERY OPERATED PUMP – BOP

**FEATURES & BENEFITS** • Modular Power Head - a single Power Head for multiple pump stems • New Modular Concept - Sealed wetted parts for zero contamination • Safety Lockout Carry Handle - For simple Power Head transfer • Easy Control Dispensing Gun - Simple single handed 'on demand' flow nozzle • Adjustable suction tube length • Lithium-ion Battery & Cradle Charger • Drain-back Valve & Nozzle Holder - To catch and collect gun residue • Adaptors to suit most 20 & 60/205 litre drums Info from BOP Product Sheet - Domestic.pdf (macnaught.com)

Suitable For	20 Litre drum		60/205 Litre drum	
Description	BOP 20 Litre Starter Kit	BOP 20 Litre Stem Kit	BOP 60/205 Litre Starter Kit	BOP 60/205 Litre Stem Kit
Part Number	BP20S-UNA	BP20X-UNA	BP205S-UNA	BP205X-UNA
Modular Power Head	✓	✗	✓	✗
Rechargeable Battery	2.0Ah Li-ion	✗	2.0Ah Li-ion	✗
Cradle Charger	✓	✗	✓	✗
Easy Control Dispensing Gun	✓	✓	✓	✓
Reinforced Hose	1.5m	1.5m	2m	2m
Bung Adaptor	Suits most 20 litre drums		Suits 60/205 litre drums	
Compatible Fluids	Suitable for engine oil, gear oil, hydraulic oil (oils up to SAE140 viscosity), automatic transmission fluid (ATF) and engine coolant			
Warranty	2 Years			



### Macnaught BOP20 Power Head

Part No.  
BP20-PH



### Macnaught BOP inline meter

Part No.  
IM012EB-01



### Macnaught BOP20 2.0AH Battery

Part No.  
BPB-20AH



### Macnaught BOP Charger

Part No.  
BPC-A



## PNEUMATIC OIL PUMPS

Common pumps listed. Other options available!

### Samoa 3:1 pump with 3m hose and on/off valve

Part No.  
454111N



### Samoa 3:1 pump with 3m hose and metered hand piece

Part No.  
454110N



### Samoa 5:1 pump only

Part No.  
348120



### Samoa 3:1 pump with 8m hose reel, metered hand piece and drum trolley

Part No.  
378100NZ



### Samoa 3:1 pump with 3m hose, metered hand piece and drum trolley

Part No.  
376300NZ



## HAND PIECES

**Basic Hand Piece on/off**

- Manual open/close nozzle with an ergonomic grip and trigger lockout
- Flow up to 40 L/min
- Max working pressure of 1450 psi (100 bar)
- ½" BSP (f) inlet port, including swivel

**Part No.**  
363114

**Electronic Hand Piece**

- Electronically meters and totalises the amount of lubricant dispensed
- Uses std AAA batteries
- Flow up to 30 L/min
- Max working pressure of 1450 psi (100 bar)
- ½" BSPT (f) inlet port, including swivel

**Part No.**  
365534

**Electronic Hand Piece Preset**

- Can meter to 99.9L, programmable with up to 5 preselects
- Flow up to 30 L/min
- Maximum operating pressure of 994psi (69bar)
- ½" BSP (f) inlet port, including swivel

**Part No.**  
365300

**Drum Level Measuring Gauge 205L**

- This unique mechanical measuring gauge is designed to show the level of fluid in a 205L drum

**Part No.**  
318008

## HOSE REELS

**EL Series Air Hose 10mm x 15m enclosed**

**Part No.**  
HR40010

**EL Series Air Hose 15mm x 15m enclosed**

**Part No.**  
HR40020

**EL Series Water Hose 12mm x 20m enclosed**

**Part No.**  
HR40050

**EL Series Oil Hose 12mm x 10m enclosed**

**Part No.**  
SO1700



## MACNAUGHT / RETRACTA HOSE REELS

### Macnaught Retractor E-Series

#### 15m x 3/8" Air Hose

Part No.  
ESAW1015-01

#### 10m x 1/4" Grease Hose

Part No.  
ESGR0610-01

#### 10m x 1/2" Air Hose

Part No.  
ESAW1210-01

#### 10m x 1/2" Oil Hose

Part No.  
ES01210-01



### Macnaught R3-Series

- Available for Air, Grease, Oil, Water, Hot Water, Coolant, High Pressure Water, Oxy/Acet, Oxy/LPG, Ag Chemical
- Red, Blue, Grey, Black and Green options available.



#### 20m x 3/8" Air Hose

Part No.  
AR320B-01



#### 20m x 1/2" Air Hose

Part No.  
AR420B-01



#### Water Reel 18m x 1/2" Green

Part No.  
DR418G-03



#### 15m x 1/4" Grease Hose

Part No.  
GR215D-01



#### 15m x 1/2" Oil Hose

Part No.  
OMP415B-01





## OIL DRAIN



**Alemlube Waste Oil Drainer 80L reservoir**

Part No.  
30080



**Alemlube Low Profile Oil Drain/cart 100L**

Part No.  
42100

## STORAGE

Alemlube Twin Skin tanks are perfect for the storage of oil in a workshop, keeps everything tidy and compliant. Talk to TWL about matching these tanks with the correct pumps and filtration.

**Alemlube Twin Skinned Tank 1500L**

Part No.  
75490

**Alemlube Twin Skinned Tank 1000L**

Part No.  
73920

**Alemlube Twin Skinned Tank 750L**

Part No.  
73910

**Alemlube Twin Skinned Tank 400L**

Part No.  
75460



## ICAN

The iCan oil container range is one of the best ways to help reduce the risk of contamination. With sealing lids and spouts and interchangeable colour coded handles and tags to easily identify the products inside.

With many smart design features the iCan is built tough to handle the riggers of the New Zealand workshop.



#### iCan 2L Container With 25mm Pour Lid Kit

- Available with 6, 12 or 25mm pour spouts

Part No.  
001007-25



#### iCan 5L Container With 25mm Pour Lid Kit

- Available with 6, 12 or 25mm pour spouts

Part No.  
001014-25



#### iCan 10L Container With 25mm Pour Lid Kit

- Available with 6, 12 or 25mm pour spouts

Part No.  
001021-25



#### iCan Pump with T Handle Suits 5 & 10 Litre Containers

Part No.  
001083



## OIL POURERS

#### Oil Measure 1L Flexi Spout

Part No.  
1000MFN

#### Oil Measure 2L Flexi Spout

Part No.  
2000MFN

#### Oil Measure 5L Flexi Spout

Part No.  
5000MFN

#### Oil Measure 10L Flexi Spout

Part No.  
10000MF

EA



## FUNNELS

**Alemlube Clean  
Funnel 1.4L high  
flow port**

Part No.  
10350CF



**Alemlube Clean  
Funnel 1.4L slim  
line port**

Part No.  
10430CF



**4 piece std funnel set**

Part No.  
11000SFS

**250mm std funnel**

Part No.  
12250SF



## SPRAY

**Alemlube Brake  
Clean Pump  
Sprayer 1.5L  
Solvent safe**

Part No.  
6603A



**Teroson Pump  
Sprayer 1L Solvent  
safe**

Part No.  
150037



**CRC Pump Spray  
Bottle 1L Solvent  
safe**

Part No.  
CRC30463



**Trigger Applicator  
500ml for CRC 556**

Part No.  
CRC4000



**Trigger Applicator  
500ml CRC  
Brakleen, Lectra  
Clean and other  
solvents**

Part No.  
CRC4014



**INOX Spray  
Applicator Bottle  
500ml**

Part No.  
4214I



## DRUM HANDLING



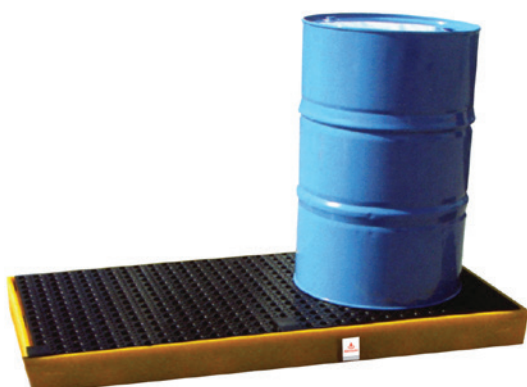
- Complies with Australian Standard AS4991.
- Fits to almost all plastic and steel 205 litre drums with lids fitted, which have a rim.
- Capable of extracting a drum from the middle of a cluster without affecting the other drums.
- Holds up to 1 tonne easily

Part No.  
PDG100



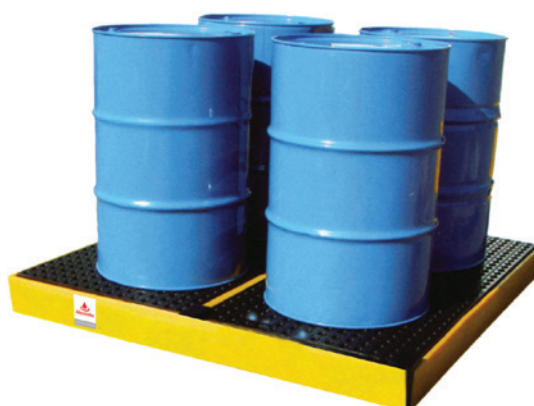


## WORK FLOOR



**2 Drum work floor**

Part No.  
SJ-300-001



**4 Drum work floor**

Part No.  
SJ-300-006



**2 Drum Containment**

Part No.  
SJ-100-002



**4 Drum Containment**

Part No.  
SJ-100-006



**2 Drum Vertical storage**

Part No.  
SJ-200-003



**4 Drum Vertical storage**

Part No.  
SJ-200-010

## SPILL KITS



Part No.  
NZSKOFV025



### 25L Oil & Fuel Spills Kit

- Liquid Absorb Capacity: 28-31L

Part No.  
NZSKOF025



### 50L Oil & Fuel Spills Kit

- Liquid Absorb Capacity: 41-61L

Part No.  
NZSKOF050



### 120L Oil & Fuel Spills Kit

- Liquid Absorb Capacity: 100-130L

Part No.  
NZSKOF120



### 240L Oil & Fuel Spills Kit

- Liquid Absorb Capacity: 198-258L

Part No.  
NZSKOF240

## DISPOSABLE NITRILE GLOVES



### Disposable Nitrile Black Powder Free H/Duty Gloves

Part No.	Size	Unit
MDNPFHDS	S	PK100
MDNPFHDM	M	PK100
MDNPFHDL	L	PK100
MDNPFHDXL	XL	PK100
MDNPFHD2XL	2XL	PK100



### Diamond Grip Black HD Nitrile Gloves 240mm Cuff

Part No.	Size	Unit
102430	M	PK100
102440	L	PK100
102450	XL	PK100



### Visible Nitrile Single Use Gloves Orange

Part No.	Size	Unit
120020	S	PK100
120030	M	PK100
120040	L	PK100
120050	XL	PK100
120060	2XL	PK100



## CRC SMART WASH SYSTEM



**Ozy Juice SW-X1**

Part No.  
CRCSW-X1



**Ozy Juice Heavy Duty Solution 20L**

Part No.  
CRCSW4



**Ozy Mat, multi layer filter mats for your Smart Washer System**

Part No.  
CRCFL-4

## CRC SmartWasher® PRODUCT GUIDE

## BE SAFE BE SMART PROTECT YOUR TEAM AND THE ENVIRONMENT

The CRC SmartWasher® is a bioremediating parts washing system designed to clean parts and equipment during repair and maintenance operations - safely. The system combines 3 essential components - the SmartWasher® parts washer, the OzyJuice® cleaning fluid, and the OzyMat® filter that contains a proprietary blend of microbes.

The SmartWasher® heats and circulates the OzyJuice® and the OzyMat® cleans the parts. The OzyMat® releases the microbes into the cleaning fluid to break down and eat oil, grease and carbon-based contaminants, creating a self-cleaning system that does not generate hazardous waste.

The SmartWasher® system harnesses the power of nature to deliver exceptional cleaning performance while also eliminating the need to handle or dispose of hazardous waste, making it a safer choice over manual solvent or aqueous-based parts washers.

### WHAT IS BIOREMEDIATION?

Bioremediation is the use of microbes to break down and "eat" oil, grease, and carbon-based contaminants. This proven biotechnology is used to assist in the clean-up of wastewater treatment ponds and lagoons in petroleum refineries and industrial manufacturing facilities all around the world.

- 1 Oil contaminants enter the solution as parts are washed.
- 2 Surfactant in OzyJuice® solution emulsifies the oils.
- 3 Emulsified oil is eaten by the Ozy® microbes.
- 4 Oil is converted into water and carbon dioxide.





## BULK FLUID FILTRATION



**Alemlube 12V Diesel Refuelling Kit**

Part No.  
52000A



**Alemlube Heavy Duty Hi-Flo Refuelling Pump**

Part No.  
5060AN



**Alemlube 1" Auto Shut off Nozzle**

Part No.  
51037



**Alemlube 1" Mechanical Diesel Fuel Meter**

Part No.  
51008F

## TANK BREATHERS

As you take fluid out of a drum or tank that volume is replaced with air, and all the dampness or dust it carries, the same thing happens when the ambient temperature changes and the tank breathes. Donaldson TRAP Breathers are designed to block these contaminants from entering your tank, it may not seem like much but over time this can build into a thick sludge in your tank. The Thermally Reactive Advanced Protection (T.R.A.P.™) Breather assembly protects the fluids in your storage tank from airborne particulate moisture

contamination and ambient moisture. It combines a high capacity 3-micron air filter with a deliquescent breather and dries itself when air is expelled from the tank. This self-regenerating capability of T.R.A.P.™ enables extended life and functionality. Keep your fluids clean and dry with a Donaldson T.R.A.P.™ Breather.

Talk to one of our TWL sales staff, they help find the right system for your situation.



**Donaldson T.R.A.P Breather Kit, 1 1/2" BSP with indicator and pressure relief**

Part No.  
P506159



**Donaldson T.R.A.P Breather, 1" NPT with indicator**

Part No.  
P564669



**Donaldson T.R.A.P Breather, 1" BSP with Anti Splash Valve**

Part No.  
P766646



**Donaldson T.R.A.P Breather, 3/4" BSP with Anti Splash Valve**

Part No.  
P766645



**Donaldson T.R.A.P Breather, 3/4" BSP Metal**

Part No.  
P566037

