



Contents

Coupling & Connection Range		Page
Holland Fifth Wheels	Application Guide	E 2
	Selection Guide	E 5
	Specification Guide	E 6
	FW35	E 10
	FW31	E 12
	SK-S 36.20	E 14
	SK-S 36.20 W	E 15
	FW70	E 16
	SK-HD 38.36	E 18
	Special Apps > SK-HD 38.36 G	E 19
	Special Apps > GC 6	E 20
	Special Apps > FW3510-TR	E 21
	Special Apps > SK-S 36.20 H	E 22
	Service Tools	E 23
Mounting Options	E 24	
Kingpins	E 26	
Holland Pintle Hooks		E 28
Holland Drawbar Eyes		E 32
Ringfeder Couplings		E 38
Jeco Tow Eyes		E 40
Drawbar Kits		E 41
Rothe-Erde Ballraces		E 43

Spare Parts		Page
Holland Fifth Wheels	FW35	E 44
	FW31	E 48
	SKS 36.20	E 52
	SKS 36.20 W	E 54
	FW70	E 56
	SK-HD 38.36	E 58
	SK-HD 38.36 G	E 60
	SK-S 36.20 H	E 62
	GC6	E 64
	FW3510-TR	E 66
	Kompensator	E 68
	Ringfeder Couplings	2020G
65G/150		E 73
4040G150B		E 74
5050-B-NZ		E 75
5055-NZ		E 76
5050G5		E 77
80G5		E 78
Kits & Accessories		E 79
5050 AM/RL	E 80	

Copyright © TWL. The illustrations, information and specifications contained within this catalogue remain the property of TWL. No part of this catalogue may be reproduced in whole or in part without prior approval. While all care has been taken in the production of this catalogue, no responsibility for errors, omissions or variations will be accepted. Photography, descriptions and references are subject to change without notice.

FIFTH WHEEL APPLICATION GUIDE

Standard Duty ⁽¹⁾



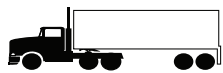
SAF-HOLLAND Group

Weight (GCW): Less than 95,000 lbs. (43,000 kg.)
 Gross Combination Weight (GCW)

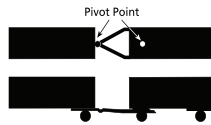
Road Type: 100% On-Road (maintained concrete or asphalt roads)

Trailer Type and Axle Limitation ⁽²⁾:

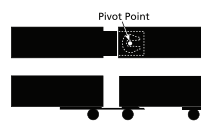
Single Trailer
 Tandem Axle Only



“A” Train—Maximum of 3 Axles
 (Trailer and Dolly Converter)



“B” Train—Maximum of 3 Axles
 (Lead and “Pup” Trailer)



Note: Any tractor used for “short haul” (e.g. city pickup and delivery) is to be considered “Moderate Duty.”

Standard Duty				
Top Plate	35 (XA-351) ⁽⁵⁾		NoLube™ 31 (XA-311)	
Maximum Vertical Load	55,000 lbs. 25,000 kg.		55,000 lbs. 25,000 kg.	
Maximum Drawbar Pull	150,000 lbs. 68,000 kg.		150,000 lbs. 68,000 kg.	
Mounting Style	Stationary	Sliding	Stationary	Sliding
Tractors				
Van Trailers	✓	✓	✓	✓
Tanker & Dry Bulk Trailers	Komp Available ⁽³⁾⁽⁴⁾		✓	✓
Vacuum Tanker	Komp Only ⁽³⁾			
Flatbed, Stretch & Pole Trailers	✓	✓	✓	✓
End Dump (Framed Trailers)	DUMP APPLICATIONS ARE CONSIDERED MODERATE OR SEVERE DUTY			
End Dump (Frameless) Trailers				
Side Dump Trailers				
Bottom Dump Trailers				
Lowboy Trailers	Komp Available ⁽³⁾⁽⁴⁾		XXXXX	XXXXX
B-Trains				
Van, Flatbed & Stretch Trailers	Komp Available ⁽³⁾⁽⁴⁾		✓	✓
Tank & Bottom Dump Trailers	Komp Available ⁽³⁾⁽⁴⁾		✓	✓
End Dump Trailers	DUMP APPLICATIONS ARE CONSIDERED MODERATE OR SEVERE DUTY			
Side Dump Trailers				
Converter Dollies	✓	✓		

Notes:

- (1) If any single limitation factor is exceeded within a given duty type, you must move up to the next duty level.
- (2) The term “Axle Limitation”, as used in this guide, refers to the total number of axles on the “towed vehicle(s)” or trailer(s).
- (3) The KOMPENSATOR fifth wheel mounting system can only be used where the loaded center of gravity of the trailer is no more than 44” (1100 mm) above the fifth wheel.
- (4) “KOMPENSATOR Available” means that plate mount and sliding KOMPENSATOR mounting systems are available as well as standard stationary and sliding mounting systems.
- (5) For applications with infrequently de-coupled trailers (married applications), specify option -82 greaseable lock pins to ensure continued lock pin lubrication and operation.

FIFTH WHEEL APPLICATION GUIDE

Moderate Duty ⁽¹⁾



Weight (GCW): Less than 115,000 lbs. (52,000 kg.)
Gross Combination Weight (GCW)

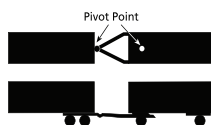
Road Type: Less than 10% Off-Road (gravel or crushed rock roads) with balance On-Road (maintained concrete or asphalt roads)

Trailer Type and Axle Limitation ⁽²⁾:

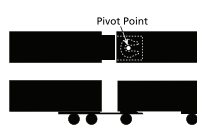
Single Trailer
Tandem and Tri-axle Only



"A" Train—Maximum of 4 Axles
(Trailer and Dolly Converter)



"B" Train—Maximum of 4 Axles
(Lead and "Pup" Trailer)



Note: Any tractor used for "short haul" (e.g. city pickup and delivery) is to be considered "Moderate Duty".

Moderate Duty						
Top Plate	35 (XA-351) ⁽⁵⁾		31 (XA-311) NoLube ⁽⁵⁾ with Greased Kingpin & Jaws		0070 (XA-71)	
Maximum Vertical Load	55,000 lbs. 25,000 kg.		55,000 lbs. 25,000 kg.		70,000 lbs. 31,750 kg.	
Maximum Drawbar Pull	150,000 lbs. 68,000 kg.		150,000 lbs. 68,000 kg.		200,000 lbs. 90,700 kg.	
Mounting Style	Stationary	Sliding	Stationary	Sliding	Stationary	Sliding
Tractors						
Van Trailers	✓	✓	✓	✓	✓	✓
Tanker & Dry Bulk Trailers	Komp Available ⁽³⁾⁽⁴⁾⁽⁷⁾		Komp Available ⁽³⁾⁽⁴⁾⁽⁷⁾		Komp Available ⁽³⁾⁽⁴⁾	
Vacuum Tanker	Komp Only ⁽³⁾⁽⁶⁾				✓	
Flatbed, Stretch & Pole Trailers	✓	✓	✓	✓	✓	✓
End Dump (Framed Trailers)	✓	✓	✓	✓	✓	✓
End Dump (Frameless) Trailers	No-Tilt Only ⁽⁶⁾		No-Tilt Only ⁽⁶⁾			
Side Dump Trailers					✓	✓
Bottom Dump Trailers	Komp Available ⁽³⁾⁽⁴⁾⁽⁷⁾		Komp Available ⁽³⁾⁽⁴⁾⁽⁷⁾		Komp Available ⁽³⁾⁽⁴⁾	
Lowboy Trailers	Komp Available ⁽³⁾⁽⁴⁾⁽⁷⁾		Komp Available ⁽³⁾⁽⁴⁾⁽⁷⁾		✓	✓
B-Trains						
Van, Flatbed & Stretch Trailers	Komp Available ⁽³⁾⁽⁴⁾⁽⁷⁾		Komp Available ⁽³⁾⁽⁴⁾⁽⁷⁾		✓	✓
Tank & Bottom Dump Trailers	Komp Only ⁽³⁾⁽⁷⁾		Komp Only ⁽³⁾⁽⁷⁾		Komp Only ⁽³⁾	
End Dump Trailers	✓	✓	✓	✓	✓	✓
Side Dump Trailers					✓	✓
Converter Dollies	Komp Available ⁽³⁾⁽⁴⁾⁽⁷⁾		Komp Available ⁽³⁾⁽⁴⁾⁽⁷⁾		Komp Available ⁽³⁾⁽⁴⁾	

Notes:

- (1) If any single limitation factor is exceeded within a given duty type, you must move up to the next duty level.
- (2) The term "Axle Limitation", as used in this guide, refers to the total number of axles on the "towed vehicle(s)" or trailer(s).
- (3) The KOMPENSATOR fifth wheel mounting system can only be used where the loaded center of gravity of the trailer is no more than 44" (1100 mm) above the fifth wheel.
- (4) "KOMPENSATOR Available" means that plate mount and sliding KOMPENSATOR mounting systems are available as well as standard stationary and sliding mounting systems.
- (5) For applications with infrequently de-coupled trailers (married applications), specify option -82 greaseable lock pins to ensure continued lock pin lubrication and operation.
- (6) Trailers equipped with an oscillating/articulating bolster (kingpin) plate require a non-articulating fifth wheel such as a No-Tilt.
- (7) Moderate Duty applications require "7720" Series plate mounts for KOMPENSATOR stationary mounting systems.

FIFTH WHEEL APPLICATION GUIDE

Severe Duty ⁽¹⁾



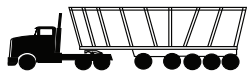
SAF-HOLLAND Group

Weight (GCW): More than 115,000 lbs. (52,000 kg.)
 Gross Combination Weight (GCW)

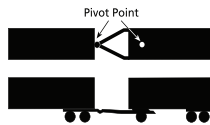
Road Type: More than 10% Off-Road (gravel, crushed rock, hard packed dirt, or unimproved / unmaintained roads)

Trailer Type and Axle Limitation ⁽²⁾:

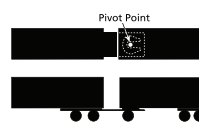
Single Trailer
 No Axle Limitations



"A" Train—No Axle Limitations



"B" Train—No Axle Limitations



Severe Duty				
Top Plate	35 (XA-351)		0070 (XA-71)	
Maximum Vertical Load	55,000 lbs. 25,000 kg.		70,000 lbs. 31,750 kg.	
Maximum Drawbar Pull	150,000 lbs. 68,000 kg.		200,000 lbs. 90,700 kg.	
Mounting Style	Stationary ⁽⁷⁾	Sliding ⁽⁸⁾	Stationary	Sliding
Tractors				
Van Trailers	✓	✓	✓	✓
Tanker & Dry Bulk Trailers	Komp Available ⁽³⁾⁽⁴⁾⁽⁹⁾		Komp Available ⁽³⁾⁽⁴⁾⁽¹⁰⁾	
Vacuum Tanker	Komp Only ⁽³⁾⁽⁹⁾		✓	
Flatbed, Stretch & Pole Trailers	✓	✓	✓	✓
End Dump (Framed Trailers)	✓	✓	✓	✓
End Dump (Frameless) Trailers	No-Tilt Only ⁽⁶⁾			
Side Dump Trailers			✓	✓
Bottom Dump Trailers	Komp Available ⁽³⁾⁽⁴⁾⁽⁹⁾		Komp Available ⁽³⁾⁽⁴⁾⁽¹⁰⁾	
Lowboy Trailers	Komp Available ⁽³⁾⁽⁴⁾⁽¹⁰⁾		Komp Available ⁽³⁾⁽⁴⁾⁽¹⁰⁾	
B-Trains				
Van, Flatbed & Stretch Trailers	Komp Available ⁽³⁾⁽⁴⁾⁽⁹⁾		✓	✓
Tank & Bottom Dump Trailers	Komp Only ⁽³⁾⁽⁹⁾		Komp Only ⁽³⁾	
End Dump Trailers	✓	✓	✓	✓
Side Dump Trailers			✓	✓

Notes:

- (1) If any single limitation factor is exceeded within a given duty type, you must move up to the next duty level.
- (2) The term "Axle Limitation", as used in this guide, refers to the total number of axles on the "towed vehicle(s)" or trailer(s).
- (3) The KOMPENSATOR fifth wheel mounting system can only be used where the loaded center of gravity of the trailer is no more than 44" (1100 mm) above the fifth wheel.
- (4) "KOMPENSATOR Available" means that plate mount stationary and sliding KOMPENSATOR mounting systems are available as well as standard stationary and sliding mounting systems.
- (5) For applications with infrequently de-coupled trailers (married applications), specify option -82 greaseable lock pins to ensure continued lock pin lubrication and operation.
- (6) Trailers equipped with an oscillating/articulating bolster (kingpin) plate require a non articulating fifth wheel such as a No-Tilt.
- (7) Severe Duty applications require "7500" Series brackets for standard stationary mounting systems.
- (8) ILS standad and moderate duty sliding systems are not approved for severe duty applications. Standard sliding systems in severe duty applications require SDS, Severe Duty Slider. GCW limited to 160,000 lbs.
- (9) Severe Duty applications require "7720" Series plate mounts for KOMPENSATOR stationary mounting systems.
- (10) Severe Duty applications require "7770" Series plate mounts for KOMPENSATOR stationary mounting systems.
- (11) A fully oscillating fifth wheel should only be used when the loaded center of gravity of the trailer is at or below the fifth wheel height.

FIFTH WHEEL SELECTION GUIDE



6t

- light distribution traffic
- mid-sized carrier class
- recreational vehicles up to 7.5t

GC 6

Page E20



Imposed load: 6,000 kg
 D-value: 49 kN
 Overall height: 120 mm



14/15t

- flexible distribution traffic
- volume carrier
- two-axle carrier

SK-S 36.20 H

Page E22



Imposed load: 15,000kg
 D-value: 110 kN
 Overall height: 167mm
 Lift heights: 100, 150, 200 mm



20t

- standard long-distance haulage
- silo, tank and volume transport
- two and three-axle tractors

SK-S 36.20

Page E14



Imposed load: 20,000 kg
 D-value: 152 kN
 Overall heights: 128, 150, 185, 225, 250 mm



36t

- HGV traffic
- traffic in difficult terrain

SK-HD 38.36

Page E18



Lock size: 2"/3.5"
 Imposed load: 23,000 kg (2")
 36,000 kg (3.5")
 D-value: 162/260 kN
 Overall heights: 150, 190 mm

SK-S 36.20 W

Page E15

SK-S 36.20 Low Lube

Page E14



Imposed load: 20,000 kg
 D-value: 152 kN
 Overall heights: 128, 150, 185, 225, 250 mm

SK-HD 38.36 G

Page E19



Fifth wheel for off-road use with gimbal mounting.

Lock size: 2"/3.5"
 Imposed load: 23,000 kg (2")
 36,000 kg (3.5")
 D-value: 162/260 kN
 Overall heights: 290 mm



SAF-HOLLAND Group



FIFTH WHEEL SPECIFICATION GUIDE

Specification Guide

- 7 Steps to specifying the correct fifth wheel



The HOLLAND Fifth Wheel Specification Guide is designed to quickly complete the fifth wheel specification process. Simply complete Steps 1-7 to determine the correct fifth wheel part number to order. If after completing Steps 1-7 you are unable to determine the correct part number, please contact your Gough TWL or Transpecs representative for assistance.

- Step 1** Review “Items to consider Before Selecting Your Fifth Wheel” on **Page E8**.
- Step 2** Determine the type of vehicle your fifth wheel will be mounted on (for example, tractor, converter dolly, or B-train connection) and the type of trailer your fifth wheel will be connected to (for example, van, tanker, etc).
- Step 3** Using the Holland Fifth Wheel Application Guide on **Pages E2-4**, determine whether your vehicle will be used in a **Standard, Moderate, or Severe** duty application.
- Step 4** Using the Holland Fifth Wheel Application Guide on **Pages E2-4**, determine which fifth wheel top plates may be applicable based on the duty type, vehicle and trailer type, and capacity requirements.
- Step 5** Using the Holland Fifth Wheel Options Guide on **Page E-7**, determine the appropriate type of fifth wheel to select based on what options are required (for example, an air release locking system). For specification information please refer to the appropriate page in the Holland Fifth Wheel Top Plate Models section of the Specification Guide.
- Step 6** Using the Holland Fifth Wheel Application Guide on **Pages E2-4**, determine the appropriate type of mounting system to select based on the top plate selected (for example, standard, No-Tilt, Kompensator; and either stationary or sliding) and method of tractor frame attachment. For specification information on top plates and their applicable mounting systems, please refer to the appropriate page.
- Step 7** **A: Stationary Mounting Systems**
Having selected the required stationary mounting system, refer to **Pages E-7/8** to determine the height required. To determine the correct part number for ordering, please refer to the appropriate page in the Holland Fifth Wheel Mounting Systems section of this Guide.
- B: Sliding Mounting Systems**
Having selected the required sliding mounting system, refer to **Page E-7/8** to determine the correct part number for ordering, please refer to the appropriate page.

Specification Guide

- Items to consider before specifying a fifth wheel

Fifth Wheel Ratings and Capacities

The selection of the proper fifth wheel capacity is the most critical step in specifying a fifth wheel. The use of a fifth wheel that does not meet the required capacity for the demands of the application may result in maintenance problems or more importantly, an unsafe operating condition. The user should specify a higher capacity than their normal needs require, taking into consideration the towed vehicle weight (TVW) to be pulled, maximum drawbar load expected, vertical load to be carried by the fifth wheel, and type of operation (for example, off-highway use will normally require a higher capacity rating than on-highway use). The Holland Fifth Wheel Application Guide on **Pages E-2-4**, can help determine the appropriate fifth wheel capacity required.

Fifth Wheel Options

More than one model of fifth wheel may meet the user’s capacity requirements. In this event, fifth wheel options offering may help determine the appropriate top plate model. Available top plate options include: Right Hand Release, Air Release, Manual Secondary Lock, LowLube, NoLube, Drilled and Tapped for Auto Lube, and Fully Oscillating, as well as No-Tilt and Kompensator mounting systems.

Continued over page ...

FIFTH WHEEL SPECIFICATION GUIDE

Specification Guide Continued ...

- Items to consider before specifying a fifth wheel



Fifth Wheel Mounting Systems

After determining the appropriate top plate model, the mounting system must be specified. The first step is to determine whether a standard mounting system is sufficient or if the application requires a specialized mounting system such as a No-Tilt or KOMPENSATOR. The next decision is whether the application requires a stationary or sliding mount system.

Stationary Fifth Wheels

Stationary fifth wheels are best suited for applications where the axle loading, kingpin setting, and vehicle combination length all remain constant throughout the fleet. Stationary fifth wheels are generally lighter than sliding fifth wheels but do not offer the application flexibility of sliding fifth wheels. Based on the suspension and tractor frame, one of three tractor frame attachment methods may be specified (figures 1-3);

Figure 1: Weld On Bracket

Figure 2: ISO Feet

Figure 3: Outboard Angle Integrated Plate Mount” (universal hole pattern for medium torsional rigidity bolt-on mounting).

The final step in specifying a stationary mount fifth wheel is to determine the height required. Please see **Page X** for a discussion of factors to be considered when determining fifth wheel assembly height requirements.

Figure 1



Figure 2



Figure 3



Sliding Fifth Wheels

Sliding fifth wheels are best suited for applications where the axle loading, kingpin setting, and vehicle combination length do not remain constant throughout the fleet. Sliding fifth wheels provide the capability to 1) transfer weight between tractor axles, 2) accommodate trailers with different kingpin settings, and 3) vary vehicle combination lengths. Sliding fifth wheels also provide:

- **Better Resale Value** by providing maximum equipment flexibility
- **Improved Maneuverability** by allowing the fifth wheel to slide forward for additional maneuverability in tight locations or slide rear-ward to accommodate trailer with short landing gear clearance.
- **Increased Ride Comfort** by locating the fifth wheel closer to the centerline of the bogie or rear axle. When the axles are not overloaded, the driver has the ability to extend the unit for maximum comfort.

Based on the suspension and tractor frame, one of two tractor frame attachment methods may be specified (figures 4-5):

Figure 4: “Over-the-Frame Inboard Angle Mount)

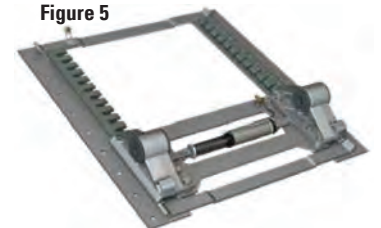
Figure 5: “Outboard Angle Mount” (bolt-on mounting)

The final step in specifying a sliding mount fifth wheel is to determine the height and travel length required. Please see the next page for a discussion of factors to be considered when determining fifth wheel assembly height and side travel requirements.

Figure 4



Figure 5



Continued over page ...

FIFTH WHEEL SPECIFICATION GUIDE

Specification Guide Continued ...

- Items to consider before specifying a fifth wheel

**Fifth Wheel Intended Use**

Intended for use with upper couplers designed to ensure an even distribution of the trailer's vertical load between two surfaces. Refer to ISO standard 3842 for minimum force introduction area and SAF-Holland Service Bulletin XL-SB033, Fifth Wheel and Upper Coupler Connections.

1. Pulling trailers with standard SAE kingpins which are in good condition and securely mounted or locked in position in the trailer.
2. Transport loads that are within the maximum fifth wheel rated capacities.
3. In both on-road and off-road applications.

Fifth Wheel Non-Intended Use

Intended for use with upper couplers designed to ensure an even distribution of the trailer's vertical load between two surfaces. Refer to ISO standard 3842 for minimum force introduction area and SAF-Holland Service Bulletin XL-SB033, Fifth Wheel and Upper Coupler Connections.

1. Operating with a non-SAE kingpin, such as kingpins which are bent, improper size or dimension, not secured to maintain SAE configuration, or which are installed in warped trailer bolster plates, or upper coupler and fifth wheel lube plates that do not maintain the SAE kingpin dimension, Refer to SAF-Holland Service Bulletin XL-SB004-01 (available on the internet at www.safholland.us) for more information on fifth wheel lube plates.
2. Tow-away operations which damage or interfere with the proper operation of the fifth wheel.
3. The attachment of lifting devices.
4. The transport of loads in excess of rated capacity.

Fifth Wheel Height

Correct fifth wheel height specification is critical because the overall combination tractor/trailer height cannot exceed 13'6". Fifth wheels are designed to operate with the top plate level, so every attempt should be made to match the fifth wheel height with the trailer upper coupler (bolster plate) height. The maximum allowable fifth wheel height is determined by subtracting the trailer height and tractor frame height from the maximum height of 13'6". In addition, operating conditions must be considered to ensure the tractor/trailer will not exceed the available articulation damaging the fifth wheel, tractor frame, or trailer (the lower the fifth wheel height, the less articulation available, especially in off-road applications). Tire clearance should also be considered, keeping in mind spring deflection under full load.

Another important consideration in determining fifth wheel height is developing a standard fleet specification. Having all tractors with the same mounted fifth wheel height (height from the ground to the top of the fifth wheel) aids in proper coupling by reducing the need to adjust trailer landing gear before coupling.

Fifth Wheel Slide Travel Length

Proper slide length specification is very important. Too short a slide length and optimum equipment utilization may not be achieved (for example inability to shift enough kingpin load to the front axle).

Too long a slide length and overloading of the front axle, or interference between the tractor/trailer during cornering may occur. Over specification of slide length also results in unnecessary additional tractor weight and initial fifth wheel cost.

Fifth Wheel Cost

No discussion of fifth wheels would be complete without referring to costs. Users should always balance the initial cost of the unit to be purchased against the application required, maintenance costs, wear life, and availability of parts and service. The least expensive initial cost fifth wheel may have a higher total cost after factoring in operational and repair costs related to tractor downtime, kingpin replacement, and tractor/trailer frame damage. If a specialty fifth wheel (for example, a KOMPENSATOR®) or special options have been recommended for your application, special consideration should be given to those recommendations. The benefits may offset the additional initial cost.



FW35 SERIES

FW35



Capacity:

- 55,000 lbs. Maximum Vertical Load
- 150,000 lbs. Maximum Drawbar Pull

Applications:

- Standard, Moderate and Severe Duty

Features:

- Cast Steel Construction
- Forged, Machined, Heat-Treated Steel Lock Jaw
- Visible Lock Indicator
- Easy Infinite Lock Adjustment
- Automatic Secondary Lock
- Closed Loop Drop Handle
- NoLube Pocket Inserts
- Cast-In Grease Grooves

Options Available:

- ELI-te

Top Plate Part Numbers:

Part No.	Description:	Weight:
XA-351-A-P	Right Hand Release	226 lbs.
XA-351-A-1R-R-P	ELI-te Version	-

Mounting Systems Available (NZ):

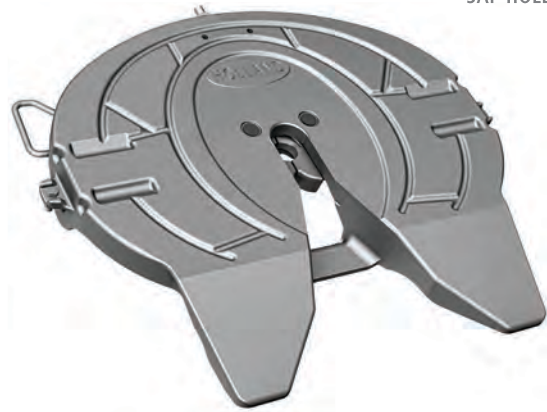
For complete assembly part numbers refer to 'Mounting System' pages.

Stationary Style:
Standard Bases:
<ul style="list-style-type: none"> • Integrated Plate Mount • Brackets (bolt-on / weld-on)
Kompensator Bases:
<ul style="list-style-type: none"> • Fixed Kompensator

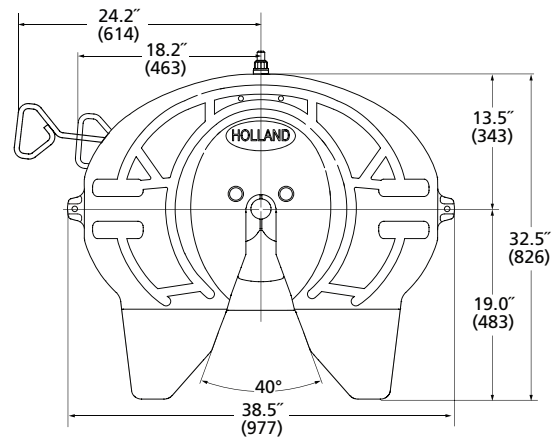
Sliding Style:
Standard Bases:
<ul style="list-style-type: none"> • ILS Outboard Mount • ILS Inboard Mount
Kompensator Bases:
<ul style="list-style-type: none"> • SDS Inboard • SDS Outboard

Rebuild and Replacement Kits:

Part No.	Description:
RK-351-A	Rebuild-Standard (RH Release)
RK-351-07296-82	XA-351 lock jaw & pin kit
RK-PKT-2	Pocket Inserts - Pair
RK-12131	ELI-te Retrofit Kit



Dimensions:



FW35 SERIES > OPTIONS

FW351 STANDARD DUTY

FW351 - 50mm (2")

Part No.	Foot Type	Height mm
FW351/135	Weld-On	135
FW351/160	Weld-On	160
FW351/185	Weld-On	185
FW351/210	Weld-On	210
FW351/150B	Bolt-On ISO	150
FW351/180B	Bolt-On ISO	180
FW351/200B	Bolt-On ISO	200



FW351 Top Plate with Feet

FW351 - 50mm (2") Integrated Mount

Part No.	Plate Dim. mm	Height mm
FW351/135IF	1016 x 469	135
FW351/160IF	1016 x 469	160
FW351/185IF	1016 x 469	185
FW351/210IF	1016 x 469	210



FW351 Integrated Mount

FW351 STANDARD DUTY KOMPENSATOR

FW351 - 50mm (2") Fixed Mount Kompensator

Part No.	Height mm	Weight kg
FW351KP	242	212

FW351 - 50mm (2") Slider Mount Kompensator

Part No.	Type:	Height mm	Weight kg	Travel mm
FW351KPAS	Inboard	326	400	610
FW351KPAS/OB	Outboard	326	400	610

Kompensator allows 5 degrees of oscillation either side of vertical centre line. Centre of gravity not to exceed 1120mm above fifth wheel top plate surface. FW351KPAS/OB is only available with pre-drilled base plates.

FW351 STANDARD DUTY SLIDER

FW351 - 50mm (2") ILS Lightweight Slider - Inboard (Weld On)

Part No.	Height mm	Travel mm	Weight kg
FW351AS/170/300ILS	170	300	185
FW351AS/170/610ILS	170	610	197
FW351AS/170/910ILS	170	910	210
FW351AS/170/1220ILS	170	1220	223
FW351AS/220/300ILS	220	300	187
FW351AS/220/610ILS	220	610	200
FW351AS/220/910ILS	220	910	212
FW351AS/220/1220ILS	220	1220	225



FW351 - 50mm (2") ILS Lightweight Slider - Outboard (Bolt On)

Part No.	Height mm	Travel mm	Weight kg
FW351AS/170/300ILS/OB	170	300	189
FW351AS/170/610ILS/OB	170	610	204
FW351AS/170/910ILS/OB	170	910	219
FW351AS/170/1220ILS/OB	170	1220	234
FW351AS/220/300ILS/OB	220	300	193
FW351AS/220/610ILS/OB	220	610	208
FW351AS/220/910ILS/OB	220	910	223
FW351AS/220/1220ILS/OB	220	1220	238



*** Airline Kit for Slider Assemblies**

Part No.	Description:
RK-2500-10A	Airline Hose Kit

FW31 SERIES

FW31 (NoLube)



Capacity:

- 55,000 lbs. Maximum Vertical Load
- 150,000 lbs. Maximum Drawbar Pull

Applications:

- Standard Duty

Features:

- NoLube Coated Lock Components
- Replaceable NoLube Plate Inserts
- NoLube Pocket Inserts
- Cast Steel Construction
- Forged, Machined, Heat-Treated Steel Lock Jaw
- Visible Lock Indicator
- Easy Infinite Lock Adjustment
- Automatic Secondary Lock
- Closed Loop Drop Handle

Options Available:

- ELI-te

Top Plate Part Numbers:

Part No.	Description:	Weight:
XA-311-A-P	Right Hand Release	251 lbs
XA-311-A-1R-R-P	ELite Option	-

Mounting Systems Available (NZ):

For complete assembly part numbers refer to 'Mounting System' pages.

Stationary Style:
Standard Bases:
• Integrated Plate Mount
• Brackets (bolt-on / weld-on)
Kompensator Bases:
• Fixed Kompensator

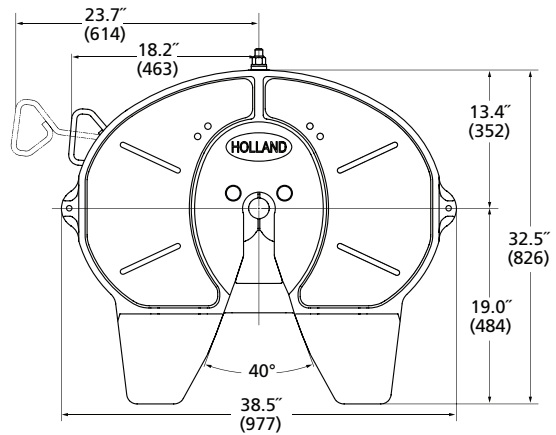
Sliding Style:
Standard Bases:
• ILS Outboard Mount
• ILS Inboard Mount
Kompensator Bases:
• SDS Inboard
• SDS Outboard

Rebuild and Replacement Kits:

Part No.	Description:
RK-311-A	Rebuild-Standard (RH Release)
RK-311-LK	Lock Jaws and pins XA-311-A-P No-Lube
RK-331-1	Lube Plate Inserts - Pair
RK-PKT-2	Pocket Inserts - Pair
RK-12131	ELI-te Retrofit Kit
RK-331-3	Lube Plates and Pocket Insert Kit



Dimensions:



FW31 SERIES > OPTIONS

FW31 STANDARD DUTY

FW31 - Low Lube 50mm (2")

Part No.	Foot Type	Height mm
FW31/145	Weld-On	145
FW31/170	Weld-On	170
FW31/195	Weld-On	195
FW31/220	Weld-On	220
FW31/160B	Bolt-On	160
FW31/190B	Bolt-On	190
FW31/210B	Bolt-On	210



FW31
Top Plate with Feet

FW31 - Low Lube 50mm (2") Fixed Mount

Part No.	Plate Dim. mm	Height mm
FW31/145IF	1016 x 469	145
FW31/170IF	1016 x 469	170
FW31/195IF	1016 x 469	195
FW31/220IF	1016 x 469	220



FW31 Integrated
Mount

FW31 STANDARD DUTY SLIDER

FW31 - LowLube 50mm (2") ILS Lightweight Slider - Inboard

Part No.	Height mm	Travel mm	Weight kg
FW31AS/180/300ILS	180	300	193
FW31AS/180/610ILS	180	610	205
FW31AS/180/910ILS	180	910	218
FW31AS/180/1220ILS	180	1220	235
FW31AS/230/300ILS	230	300	197
FW31AS/230/610ILS	230	610	210
FW31AS/230/910ILS	230	910	222
FW31AS/230/1220ILS	230	1220	240



FW31 - LowLube 50mm (2") ILS Lightweight Slider - Outboard

Part No.	Height mm	Travel mm	Weight kg
FW31AS/180/300ILS/OB	180	300	201
FW31AS/180/610ILS/OB	180	610	216
FW31AS/180/910ILS/OB	180	910	231
FW31AS/180/1220ILS/OB	180	1220	250
FW31AS/230/300ILS/OB	230	300	205
FW31AS/230/610ILS/OB	230	610	220
FW31AS/230/910ILS/OB	230	910	235
FW31AS/230/1220ILS/OB	230	1220	250



FW31 STANDARD DUTY KOMPENSATOR

FW31 - LowLube 50mm (2") Fixed Mount Kompensator

Part No.	Height mm	Weight kg
FW31KP	252	216

FW31 - LowLube 50mm (2") Slider Mount Kompensator

Part No.	Type:	Height mm	Weight kg	Travel mm
FW31KPAS	Inboard	336	404	610
FW31KPAS/OB	Outboard	336	404	610

Kompensator allows 5 degrees of oscillation either side of vertical centre line. Centre of gravity not to exceed 1120mm above fifth wheel top plate surface. FW31KPAS/OB is only available with pre-drilled base plates.

*Airline Kit for Slider Assemblies RK-2500-10A Airline Hose Kit

SK-S 36.20

SK-S 36.20

Specification:

The lightweight, spheroidal graphite cast iron 20 t fifth wheel.

- Imposed load: 20,000 kg
- Overall heights: 128, 150, 185, 225, 250 mm
- D-value: 152 kN
- ECE test no.: E1 55R-01 0218

Applications:

- Standard Duty

Features:

- Additional convenient visual control of locking status through the position of the Automatic Safety Latch, indicating fully locked and secured (raised) or open (lowered) conditions.
- Up to 33 kg lighter, reliable and robust
- Safe and simple single-handed operation, automatic safety lock
- Simple and safe wear adjustment
- Permanent, maintenance-free bearings
- Optimised lubrication channels for effective grease flow
- Connections for central lubrication
- Approved for forced steering

Top Plate Only Part Numbers:

Part No.	Description:	Weight:
662129003	SK-S 36.20 Top Plate	99kg

Mounting Systems Available (NZ):

For complete assembly part numbers refer to 'Mounting System' pages.

Stationary Style:

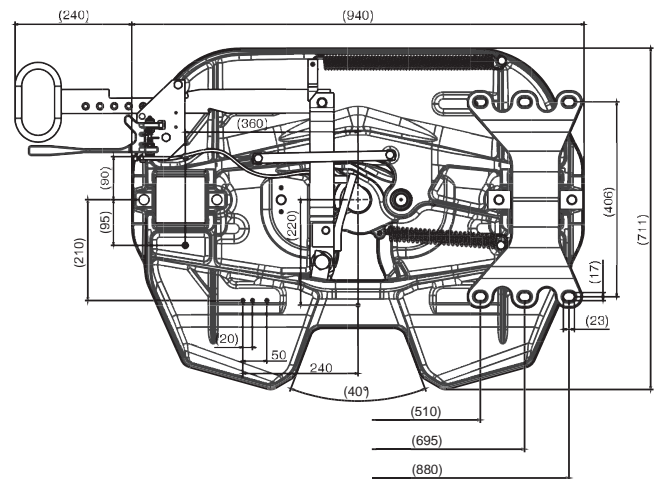
Fixed ISO Bolt-On
(Slider options are available)

Rebuild and Replacement Kits:

Part No.	Description:
662101492	Lock Repair Kit
662101566	Wear Ring Repair Kit
662101473	Repair Kit for Bearing



Dimensions:



Mounting hole pattern according to DIN 74081.
Subject to modifications in dimensions and design.

SK-S 36.20 > OPTIONS

SK-S 36.20 STANDARD DUTY

Fixed ISO Mount

Part No.	Height mm	Weight kg
662129046	125	116
662129047	150	116
662129048	185	119
662129031	225	121
662129049	250	131



SKS 36.20
Top Plate with Feet

20T Imposed Load, 152kN D-value

*** Slider Mounting Available**
Refer page E25 for mounting options.

SK-S 36.20 W SERIES

SK-S 36.20 W



Specification:

The lightweight, low maintenance spheroidal graphite cast iron 20 t fifth wheel.

- Imposed load: 20,000 kg
- Overall heights: 128, 150, 185, 225, 250 mm
- D-value: 152 kN
- ECE test no.: E1 55R-01 0218

Applications:

- Standard Duty

Features:

- Up to 33 kg lighter, designed for highway application
- Less grease consumption
- Easily replaceable low friction wear plates
- Safe single-handed operation, automatic safety lock
- Simple and safe wear adjustment
- Permanent, maintenance-free bearings
- Approved for forced steering

Top Plate Part Numbers:

Part No.	Description:	Weight:
662131002	Top Plate (excluding Wear Pad)	99kg

Mounting Systems Available (NZ):

For complete assembly part numbers refer to 'Mounting System' pages.

Stationary Style:

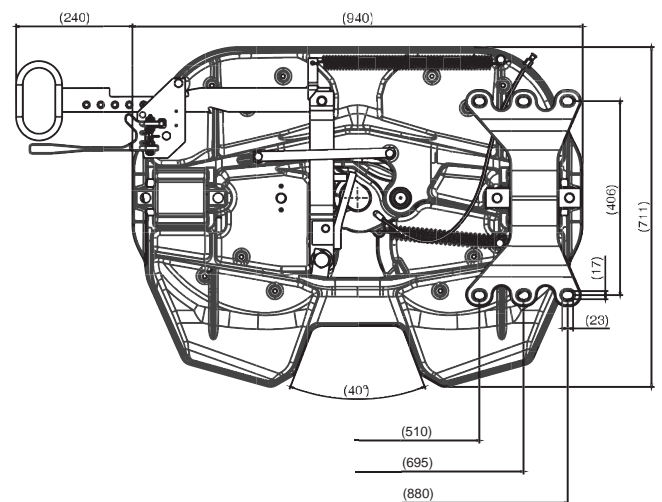
Fixed ISO Bolt-On
 (Slider options are available)

Rebuild and Replacement Kits:

Part No.	Description:
662101469	Repair Kit for Wear Plates
662101517	Repair Kit for Locking Mechanism
662101534	Repair Kit for Wear Ring
662101518	Repair Kit for Bearings



Dimensions:



Mounting hole pattern according to DIN 74081.
 Subject to modifications in dimensions and design.

SK-S 36.20 W SERIES > OPTIONS

SK-S 36.20 W STANDARD DUTY

Fixed ISO Mount

Part No.	Height mm	Weight kg
662131011	128	116
662131012	150	116
662131013	185	119
662131042	225	121
662131014	250	131



SKS 36.20 W
 Top Plate with Feet

20T Imposed Load, 152kN D-value

*** Slider Mounting Available**
 Refer page E25 for mounting options.

FW70 SERIES

FW70



Capacity:

- 70,000 lbs. Maximum Vertical Load
- 200,000 lbs. Maximum Drawbar Pull

Applications:

- Moderate and Severe Duty

Features:

- Cast Steel Construction
- Forged, Machined, Heat-Treated Steel Lock Jaw
- Easy Infinite Lock Adjustment
- Manual Secondary Lock
- Cast-In Grease Grooves



Top Plate Part Numbers:

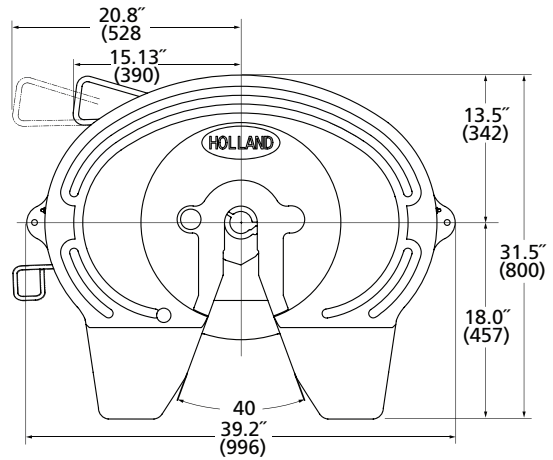
Part No.	Kingpin Lock:	Weight:
XA-71-DA-ES	2"	316 lbs
XA-71-OA-ES	3.5"	316 lbs

Mounting Systems Available (NZ):

For complete assembly part numbers refer to 'Mounting System' pages.

Stationary Style:	Sliding Style:
Standard Bases:	Kompensator Bases:
<ul style="list-style-type: none"> • Weld On 	<ul style="list-style-type: none"> • SDS Inboard • SDS Outboard

Dimensions:



Rebuild and Replacement Kits:

Part No.	Description:	Kingpin Lock:
RK-65014	Rebuild	2"
RK-65014-1	Rebuild (FW2570-7103*, FW2570-7450*)	2"
RK-65015	Rebuild	3.5"
RK-65015-1	Rebuild (FW2570-7103*, FW2570-7450*)	3.5"
RK-65024	Lock Replacement Kit	2"
RK-65024-1	Lock Replacement Kit	3.5"
RK-65025	Secondary Lock Replacement	

FW70 SERIES > OPTIONS

FW70 HEAVY DUTY

Note: More height options can be made available on special orders.

Part No.	Foot Type	Height mm
FW70/216	Weld-On	216

FW70 - 90mm (3.5")

Part No.	Foot Type	Height mm
FW70/216-03	Weld-On	216

FW70 HEAVY DUTY KOMPENSATOR

FW70 - 50mm (2") Slider Mount Kompensator

Part No.	Type:	Height mm	Weight kg	Travel mm
FW70KPAS	Inboard	326	435	610
FW70KPAS/OB	Outboard	326	464	610

FW70 - 90mm (3.5") Slider Mount Kompensator

Part No.	Type:	Height mm	Weight kg	Travel mm
FW70KPAS-03	Inboard	326	435	610
FW70KPAS/OB-03	Outboard	326	464	610

FW70 SLIDER OPTIONS

Note: Slider options are available on special order only.



SK-HD 38.36 SERIES

SK-HD 38.36



Specification:

The 36t cast steel fifth wheel for heavy transportation

- Imposed load: 23,000 kg (2') / 36,000 kg (3.5')
- Overall heights: 150, 190 mm
- D-value: 162 kN (2') / 260 kN (3.5')
- ECE test no.: E11 55-R-01 8550 (2')
- ECE test no.: E11 55-R-01 8549 (3.5')

Applications:

- Heavy and Severe Duty

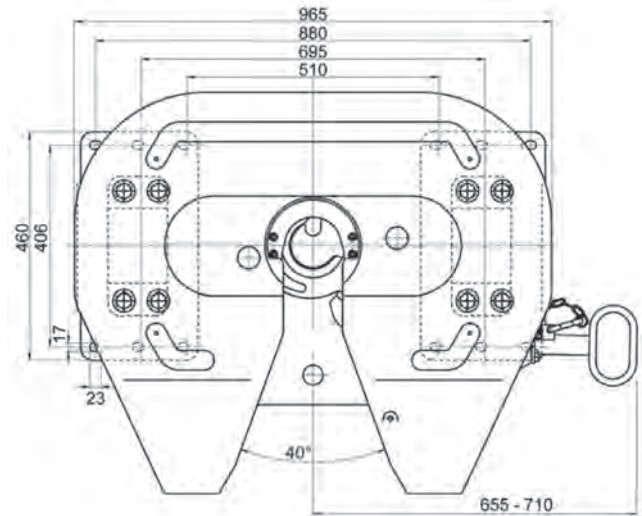
Features:

A highly robust cast steel coupling plate is fitted on durable, maintenance-free bearings. It is possible to choose between 3½' and 2'. The later conversion is just as easily possible as readjusting the clearance at the lock.

- Permanent, maintenance-free bearings
- Conversion from 3½' to 2' and vice versa possible
- Simple adjustment of locking mechanism
- Suitable for steering wedge applications



Dimensions:



Mounting hole pattern according to DIN 74081 or DIN 74084.
Subject to modifications in dimensions and design.

SK-HD 38.36 SERIES > OPTIONS

SK-HD 38.36 - 50mm (2") Top Plate c/w Feet

Part No.	Feet mm	Height mm	Weight kg	D Rating kN
662111074	190	190	185	162

SK-HD 38.36 - 90mm (3.5") Top Plate c/w Feet

Part No.	Feet mm	Height mm	Weight kg	D Rating kN
662111066	190	190	185	260

SK-HD 38.36 - Lock Jaw Conversion Kits

Part No.	Description
662 101 705	2 to 3.5" Conversion Kit
662 101 704	3.5 to 2" Conversion Kit

FIFTH WHEEL SPECIAL APPLICATIONS > SK-HD 38.36 G SERIES

SK-HD 38.36 G Fully Oscillating Fifth Wheel



Specification:

The 36t cast steel fifth wheel for heavy transportation

- Imposed load: 23,000 kg (2') / 36,000 kg (3.5')
- Overall heights: 150, 190 mm
- D-value: 162 kN (2') / 260 kN (3.5')
- ECE test no.: E11 55-R-01 8550 (2')
- ECE test no.: E11 55-R-01 8549 (3.5')

Applications:

- Heavy and Severe Duty

Features:

A highly robust cast steel coupling plate is fitted on durable, maintenance-free bearings.

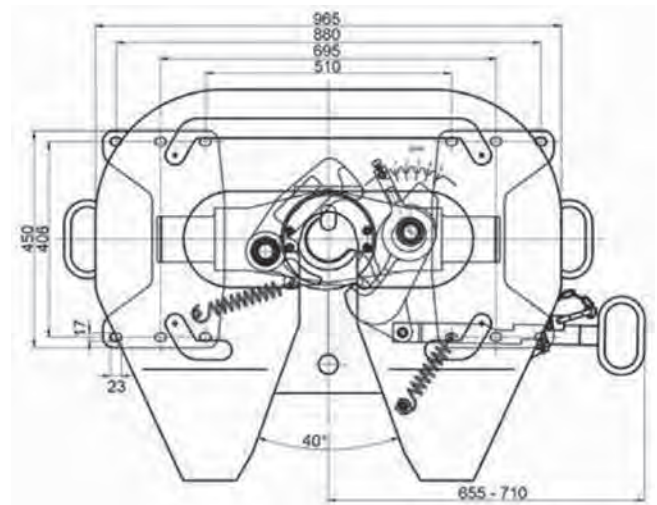
- Simple adjustment of locking mechanism
- Suitable for steering wedge applications



It is possible to choose between 3½' and 2'. The later conversion is just as easily possible as readjusting the clearance at the lock.

- Conversion from 3½' to 2' and vice versa possible

Dimensions:



Mounting hole pattern according to DIN 74081 or DIN 74084.
 Subject to modifications in dimensions and design.

SK-HD 38.36 G SERIES > OPTIONS

SK-HD 38.36 G - 50mm (2") Top Plate c/w Feet

Part No.	Height mm	Weight kg	D Rating kN
662111089	290	272	162

SK-HD 38.36 G - 90mm (3.5") Top Plate c/w Feet

Part No.	Height mm	Weight kg	D Rating kN
662111088	290	272	260

SK-HD 38.36 G - Lock Jaw Conversion Kits

Part No.	Description
662 101 705	2" to 3.5" Conversion Kit
662 101 704	3.5" to 2" Conversion Kit

* Slider Mounting Available

Refer page E24 for mounting options.

FIFTH WHEEL SPECIAL APPLICATIONS > GC 6

GC 6 Light Duty Fifth Wheel



Specification:

Lightweight, spheroidal graphite cast iron 6t fifth wheel optimised for mid-sized distribution vehicles and volume transports.

- Weight: 45 kg
- Overall height: 120 mm
- D-value: 49 kN
- Imposed load: 6000 kg

Applications:

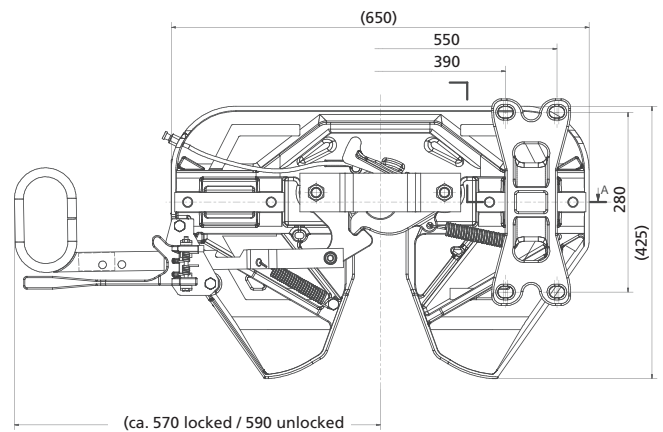
- Light Duty

Features:

- 2" fifth wheel with replaceable wear ring
- Safe and comfortable single-handed operation
- Automatic safety lock
- Low-maintenance bearings
- Lubrication channels for effective grease flow
- Wear ring fully compatible with SK-S 36.20
- Connections for optional grease cartridge
- ECE test no.: E11 55R-01 6737



Dimensions:



GC6 SERIES > OPTIONS

GC 6 - 50mm (2") Top Plate comes with Feet

Part No.	Height mm	Weight kg	D Rating kN
662121005	120	45	49

FIFTH WHEEL SPECIAL APPLICATIONS > FW3510-TR

FW3510-TR Terminal Tractor Fifth Wheel

Specification:

- Weight: 120 kg
- Gross Combination Weight: 100,000 kg
- Vertical Load: 36,000 kg
- Maximum Speed: 35 km/h

Port Application Only

Features:

- 2' fifth wheel with replaceable wear ring
- Pre-fitted with air cylinder for lock operation
- Safe and comfortable single-handed operation
- Automatic safety lock
- Low-maintenance bearings
- Lubrication channels for effective grease flow

FW3510-TR SERIES > OPTIONS

Top Plate Only:

Part No.	Description:
FW3510-TR	Terminal Tractor Top Plate Air Release
FW3510-TR-EL	Terminal Tractor Top Plate Air Release + Lock Sensor

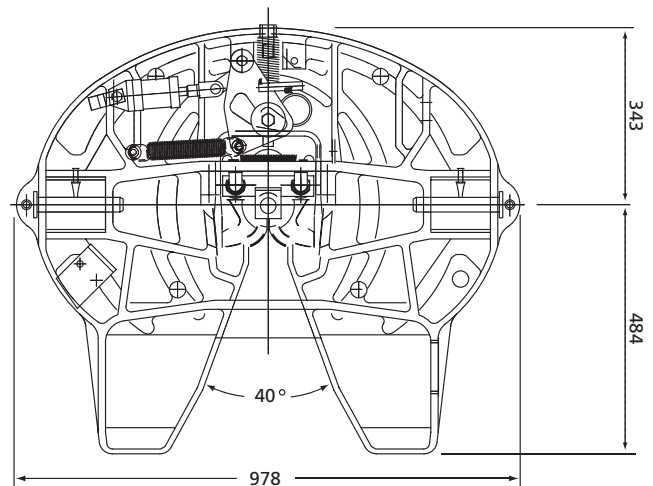
Rebuild and Replacement Kits:

Part No.	Description:
RK-3510-TR	Full Overhaul Kit
RK-3510-TR-2	Overhaul Kit excluding air cylinder
RS-91103	Lock repair kit,

Port Application Only



Dimensions:



FIFTH WHEEL SPECIAL APPLICATIONS > SK-S 36.20 H

SK-S 36.20 H Dual Height Assembly



Specification:

The proven height adjustable spheroidal graphite cast iron 15 t fifth wheel.

- Imposed load: 15,000 kg
- Overall height: 167-267, 167-317, 167-367 mm
- D-Value : 110 kN
- ECE test no.: E11 55R-01 1381

Applications:

- Standard Duty

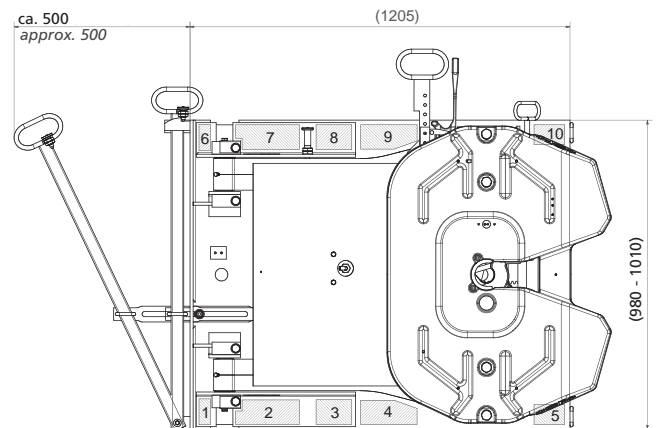
Features:

The dual-height fifthwheel is designed for volume transportation with 2-axle low liner tractors and MEGA-trailers. The adjustable height of the fifth wheel means the low liner tractor can also be used for standard trailers.

- Extremely robust and user friendly
- Weight optimised model
- Connections for central lubrication
- Simple wear adjustment
- Automatic safety lock
- Approved for forced steering



Dimensions:



SK-S 36.20 H SERIES > OPTIONS

SK-S 36.20 H- 50mm (2") Dual Height

Part No.	Plate Dim. mm	Height mm	Weight kg	D Rating kN
662132311	1205 x 950	167/267	329	122
662132312	1205 x 950	167/317	334	122

FIFTH WHEEL SERVICE TOOLS

Rebuild Stand
Part No. TF-04229-1



Lock Adjustment Tools

For all 3.5" Holland FW Models
Part No. TF-TLN-1500



For all 2" Holland FW King PM Locks
except FWS1, FWS2 and Simplex Models
Part No. TF-TLN-5001



Slider Spring Compressor - Manual
Part No. TF-TLN-2500



2" Plug
Part No. TF-0237



Pintle Hook Wear Gauge
Suits P4-760, 775
Part No. TF-10521



FIFTH WHEEL MOUNTING OPTIONS

Cast Steel Feet

Suitable for FW35 and FW31

Part No.	Description	Height mm	Qty Needed
RK-X600	Cast Foot Weld On	135	1
RK-X800	Cast Foot Weld On	185	1
RK-X900	Cast Foot Weld On	210	1
XD-04942	ISO Bolt On Foot*	150	2
XD-04943-S	ISO Bolt On Foot*	180	2
XD-04944	ISO Bolt On Foot*	200	2

* Does not include bush



Cast Steel Foot



ISO Bolt-On Foot



FW Series Integrated Mounting

Suitable for FW35 and FW31

Part No.	Description	Plate Dim. mm	Height mm
RK-Z600	Mounting Plate c/w Feet	1016 x 469	135
RK-Z700	Mounting Plate c/w Feet	1016 x 469	160
RK-Z800	Mounting Plate c/w Feet	1016 x 469	185
RK-Z900	Mounting Plate c/w Feet	1016 x 469	210



Mounting Plate with Feet

Slider Inboard Mount (Subassembly and Base Plate)
Standard Duty Application to suit FW35 and FW31

Part No.	Height mm	Travel mm
XA-B712	170	300
XA-B724	170	610
XA-B736	170	910
XA-B748	170	1220
XA-B912	220	300
XA-B924	220	610
XA-B936	220	910
XA-B948	220	1220



Inboard Mount Subassembly & Base Plate

Slider Outboard Mount (Subassembly and Base Plate)
Standard Duty Application to suit FW35 and FW31

Part No.	Height mm	Travel mm
XA-A712	170	300
XA-A724	170	610
XA-A736	170	910
XA-A748	170	1220
XA-A912	220	300
XA-A924	220	610
XA-A936	220	910
XA-A948	220	1220



Outboard Mount Subassembly & Base Plate

FIFTH WHEEL MOUNTING OPTIONS

FW Series Kompensator

Part No.	Description
XA-40-7703	Fixed Sub Assembly to suit FW35 and FW31
XA-40IZ76	Fixed Sub Assembly FW35/31 Australian Specification
XA-SK24-35	Heavy Duty Slider Base & Kompensator Assembly FW35/31/70



SK-S 36.20 Slider Base Plate (Adjustment pict 73.5mm) (pneumatic)

Part No.	Description	Drilled	Plate Dim. mm	Height mm	Travel mm	Weight kg
662206403	Air Operation, Vehicle Mnt Holes @ 952.6mm centres required inst. kit	Drilled	1060 x 1250	35	525	129



Ripple Plate to suit Standard Duty Top Plate ISO Bolt-On Feet

Part No.	Plate Dim. mm	Height mm	Imposed Load t	D Rating kN
662101106	665 x 960	22	22	162.4
662101199	665 x 1060	22	22	162.4
662101060	665 x 960	40	22	162.4
662101078	665 x 1060	40	22	162.4
662101331	710 x 970	100	16	108



SK-S 38.36 (G38) Slider Mounting - Special Order Only

Part No.	Travel mm	D Rating kN
30/074990	730 x 960	270



FIFTH WHEEL KINGPIN - NEW ZEALAND RANGE

The Kingpin - Ensuring A Safe Connection

Together with the fifth wheel, the kingpin is one of the most important vehicle components.



SAF-HOLLAND deliver the highest quality truck and trailer connection solutions through exemplary manufacturing, quality control and the experience of the HOLLAND brand - proven and trusted in the most challenging conditions, both in New Zealand and worldwide.

Drop-Out 2" SAF Kingpin

- D-value: 165 kN
- Semi-trailer skid-plate thickness: 8/10/12 mm
- Approval mark: E1 55R-01 2289
- Mounting: 8 Bolts (M14x30), 150mm PCD



Semi-trailer skid-plate thickness	Kingpin Complete	Individual Components		Attachment
		Retention Plate	Kingpin	Hex Bolts (8 pcs)
T	TWL Part No. (SAF Part No.)	TWL Part No. (SAF Part No.)	TWL Part No. (SAF Part No.)	
8 mm	62008 (1030 30 000004 0)	51008 (2031 10 000004 0)	KP620 (662101109K) (KP620A Equivalent Australian Version)	2088 10 000005 0
10 mm	62010 (1030 30 000003 0)	51010 (2031 10 000003 0)		
12 mm	62012 (1030 30 000002 0)	51012 (2031 10 000002 0)		

Drop-Out 2" SAF Kingpin

- D-value: 165 kN
- Semi-trailer skid-plate thickness: 16 mm
- Approval mark: E1 55R-01 2418
- Mounting: 8 Bolts (M20x50), 180mm PCD



Semi-trailer skid-plate thickness	Kingpin Complete	Individual Components		Attachment
		Retention Plate	Kingpin	Hex Bolts (8 pcs)
T	Part No.	Part No.	TWL Part No. (SAF Part No.)	Part No.
16 mm	1030 30 000012 0	2031 10 000009 0	662102022K (2108 30 000006 0)	2088 10 000006 0

Drop-Out 3.5" SAF Kingpin

- D-value: 165 kN
- Semi-trailer skid-plate thickness: 8/10/12 mm
- Approval mark: E1 55R-01 2371
- Mounting: 8 Bolts (M14x30), 150mm PCD



Semi-trailer skid-plate thickness	Kingpin Complete	Individual Components		Attachment
		Retention Plate	Kingpin	Hex Bolts (8 pcs)
T	TWL Part No. (SAF Part No.)	TWL Part No. (SAF Part No.)	TWL Part No. (SAF Part No.)	Part No.
8 mm	63508 (1030 30 000011 0)	51008 (2031 10 000004 0)	KP635 (2108 30 000005 0)	2088 10 000005 0
10 mm	63510 (1030 30 000010 0)	51010 (2031 10 000003 0)		
12 mm	63512 (1030 30 000009 0)	51012 (2031 10 000002 0)		

FIFTH WHEEL KINGPIN - NEW ZEALAND RANGE

Drop-In Mushroom Style 2" Weld-On Kingpin

- D-value: 151 kN

Semi-trailer skid-plate thickness	Kingpin Complete
T	Part No.
5/16"	T809/8
3/8"	T809/10
1/2"	T809/12



Kingpin Adaptor 2" to 3-1/2" Off-Road Only

- Part No. 662101100



Kingpin Gauge

- Part No. TF-0110



Skidplate Gauge

- Part No. SPG-01



KINGPIN IDENTIFICATION

Kingpins are a very safety critical component. There have been many makes and types of 2" "Drop Out" kingpins produced. Some are interchangeable and some are definitely not interchangeable – it is very important to identify the correct replacement kingpin. First establish the make and part number which should be marked on the kingpin. If there are no marks or it's illegible, then measure the critical dimensions and check the type of fixing bolts.

- 1 Flange Diameter
- 2 Flange thickness
- 3 Over Height of kingpin
- 4 Counter bore diameter and radius

